

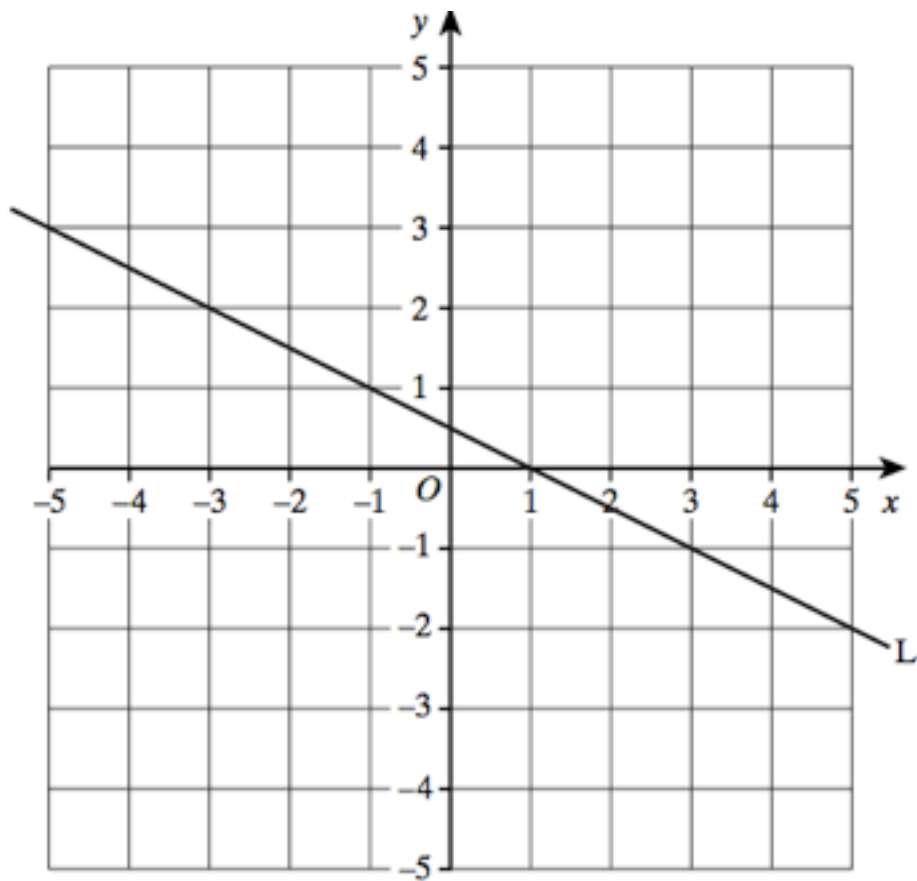
On the grid **draw** the line $y = x + 3$

.....

.....

.....

(2 marks)



Find the **equation** of the line L.

.....

.....

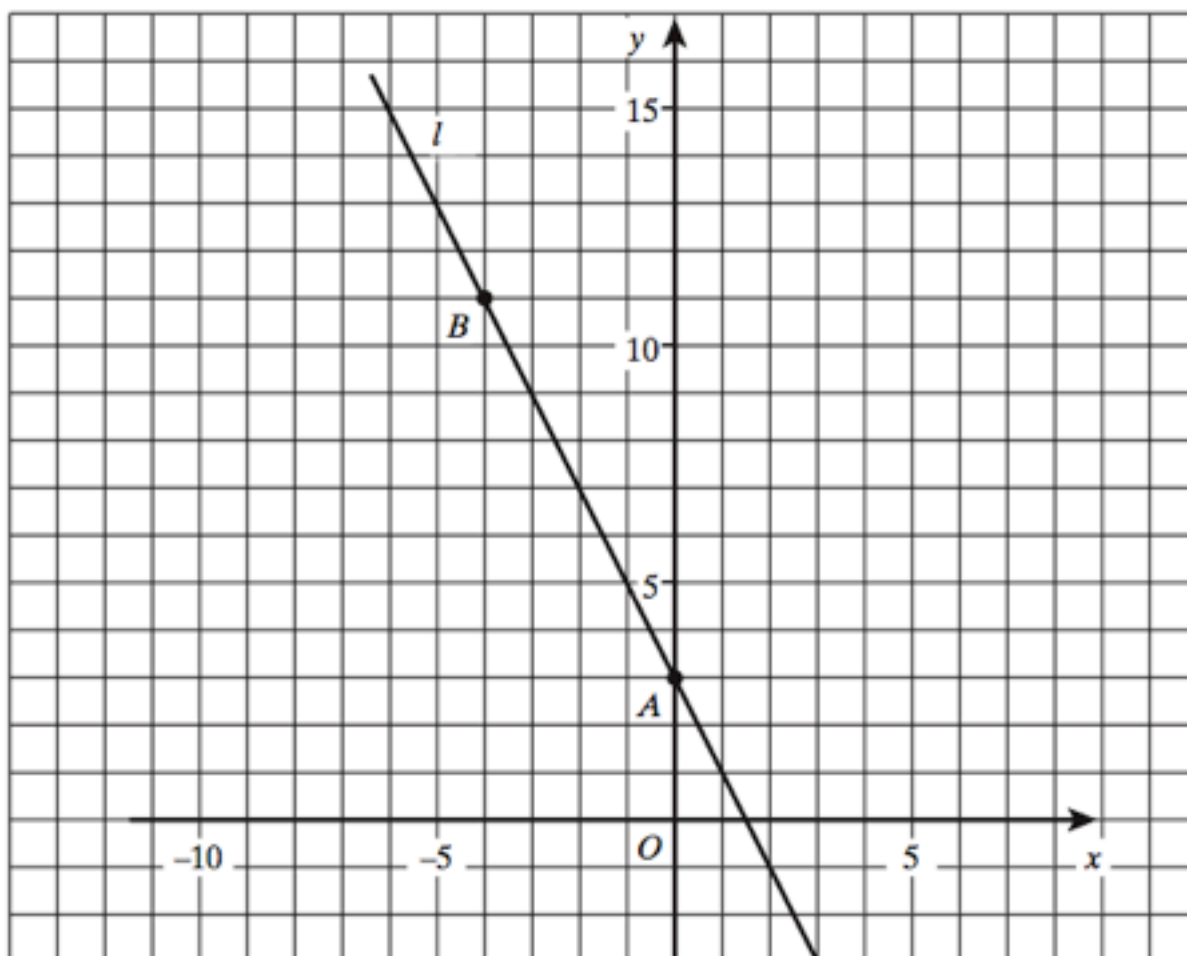
.....

.....

.....

Answer (3 marks)

The line l on the graph passes through the points $A (0, 3)$ and $B (-4, 11)$.



(a) Calculate the gradient of the line l .

.....
.....

Answer (2 marks)

(b) Write down the **equation** of the line l .

.....

Answer (1 mark)

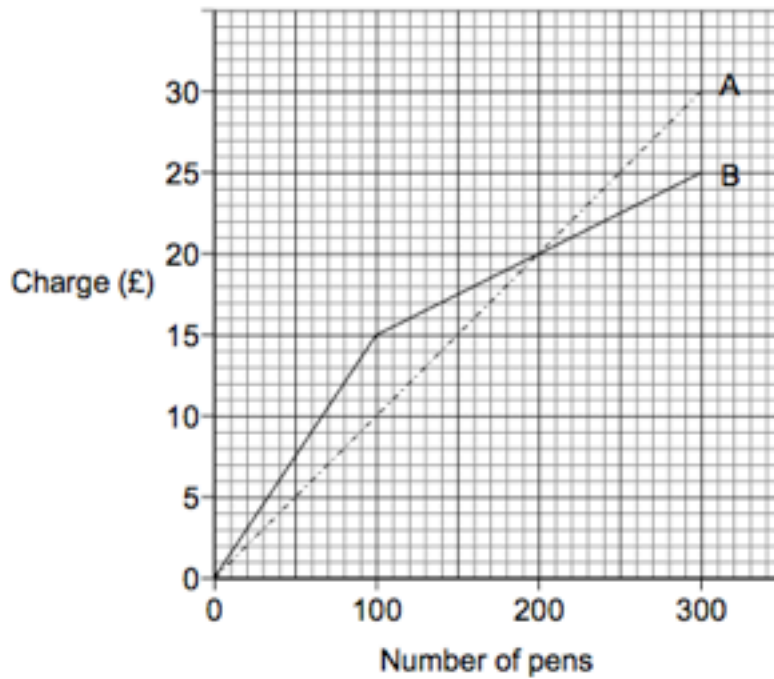
(c) Write down the **equation** of the line which also passes through the point $(0, 3)$ but is perpendicular to line l .

.....
.....

Answer (2 marks)

Two companies A and B sell pens.

The graph shows how much each company charges.



a) (i) How much does company B charge for 100 pens?

Answer £ (1 mark)

a) (ii) Which company would you buy 100 pens from?

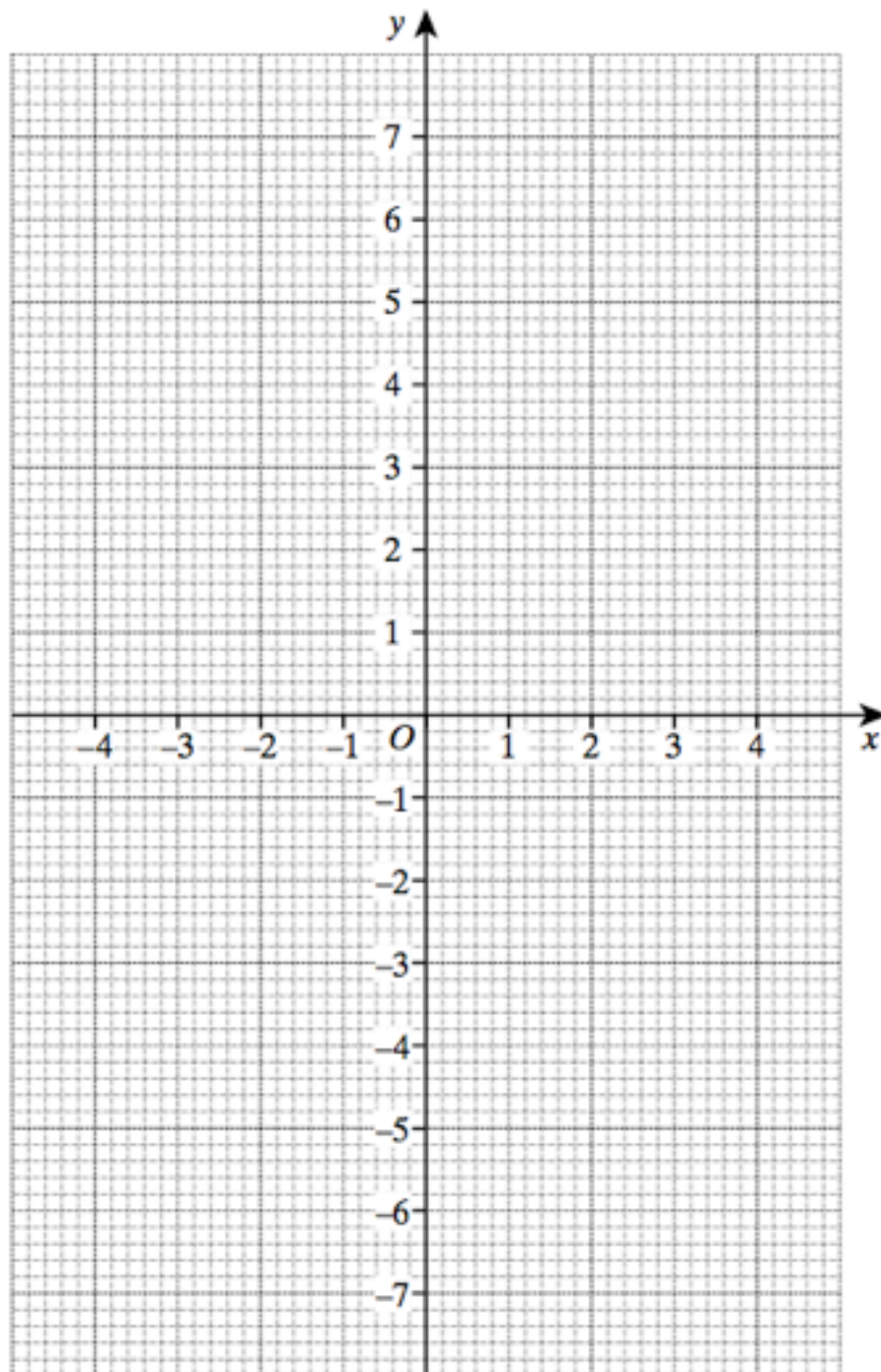
Give a reason for your answer.

.....
.....
.....

(2 marks)

On the grid below **draw** and label the lines $y = -4$ and $y = 2x + 1$

.....
.....
.....



(4 marks)

Each of these equations represents the graph of a straight line.

A: $5y + 10 = 2x$

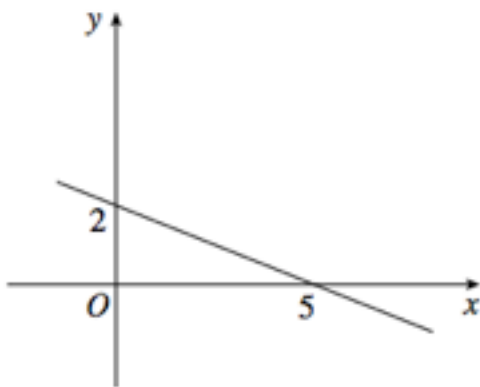
B: $5x + 2y = 10$

C: $2y + 10 = 5x$

D: $2x + 5y = 10$

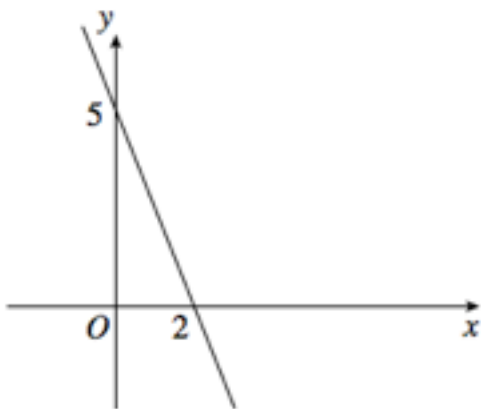
The four graphs are shown in the diagrams below.

Which equation represents which graph?



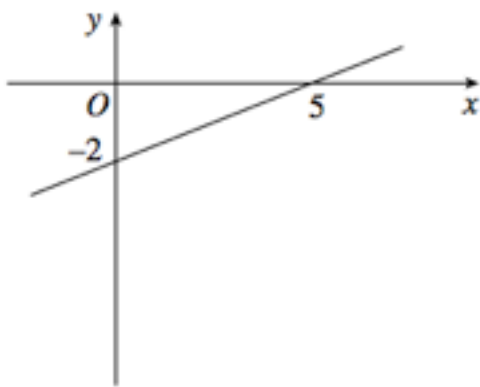
.....
.....

This is equation



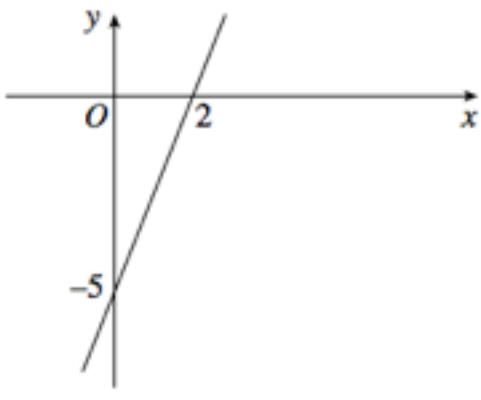
.....
.....

This is equation



.....
.....

This is equation



.....
.....

This is equation

(3 marks)