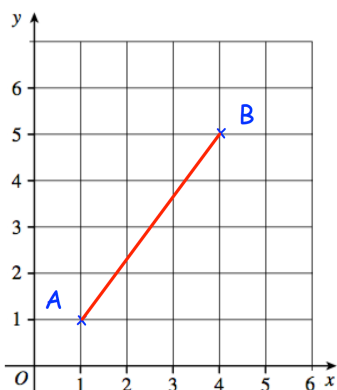


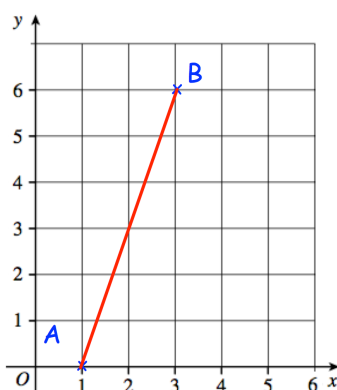
## Workout

Question 1: Calculate the length of the line joining the points A and B.

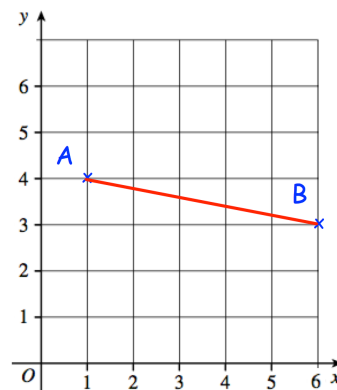
(a)



(b)

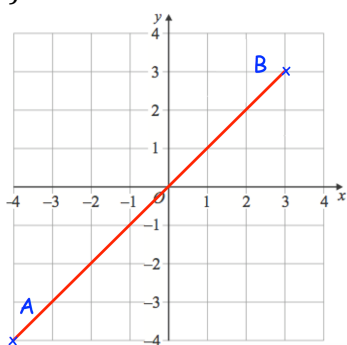


(c)

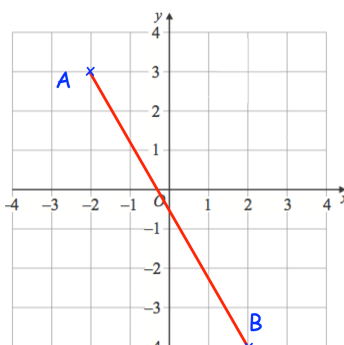


Question 2: Calculate the length of the line joining the points A and B.

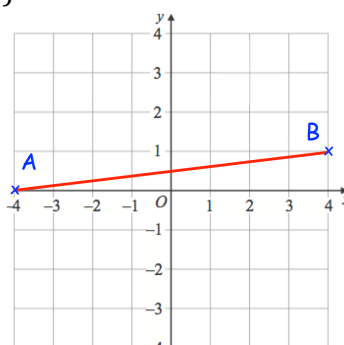
(a)



(b)

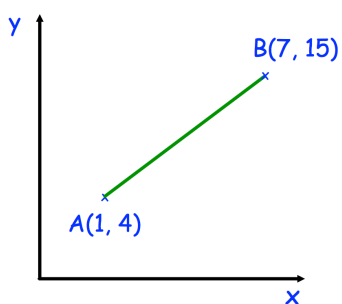


(c)

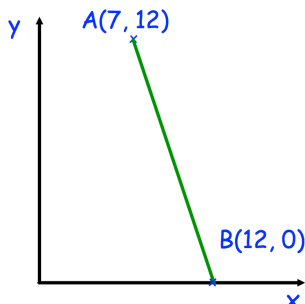


Question 3: Calculate the length of the line joining the point A and B.

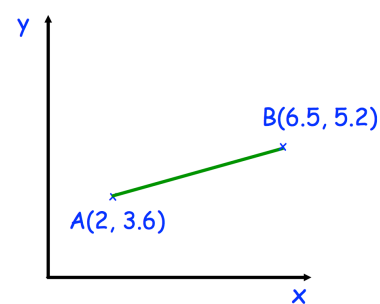
(a)



(b)

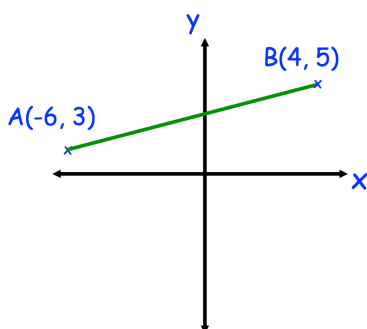


(c)

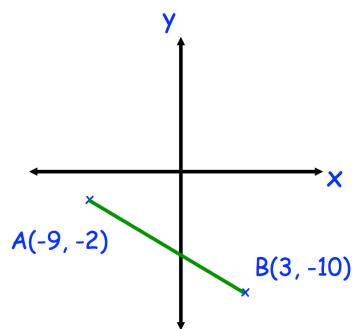


Question 4: Calculate the length of the line joining the points A and B

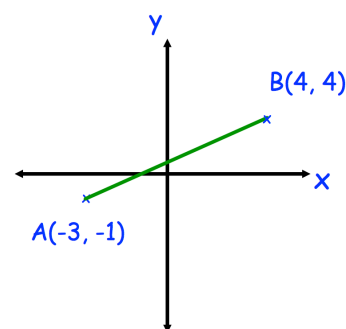
(a)



(b)



(c)



Question 5: Calculate the distance between the following pairs of coordinates

(a) (5, 1) and (9, 6)

(b) (1, 4) and (10, 10)

(c) (0, 0) and (6, 8)

(d) (2.5, 3) and (8, 0)

(e) (-6, 2) and (8, 3)

(f) (-5, -9) and (-3, 8)

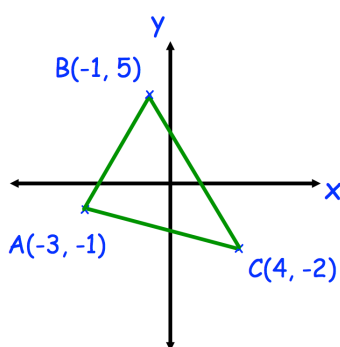
(g) (-5, 7) and (-3, -2)

(h) (-9, -9) and (3, -20)

(i) (-4, 0) and (0, -4)

### Apply

Question 1: Calculate the perimeter of triangle ABC.



Question 2: The distance between the points (1, 2) and (16, p) is 17.  
Find the value of p.

Question 3: The distance between the points (-3, -4) and (q, 5) is 15.  
Find the value of q.