

Line Graphs

Video 160 on www.corbettmaths.com

Workout

*There are templates for Questions 1 and 4 at the end of this exercise

Question 1: Draw a line graph for each of the following tables

(a)

Year	Population
1990	40
1995	44
2000	50
2005	62
2010	88
2015	90

(b)

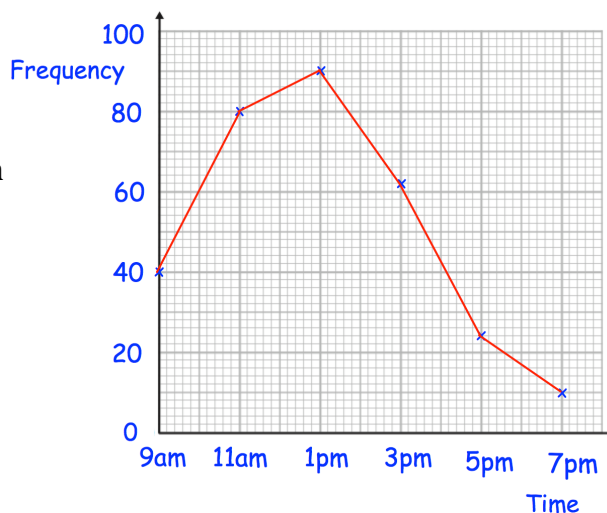
Time	Price
9am	30p
10am	24p
11am	25p
12 noon	27p
1pm	37p
2pm	38p

(c)

Month	Height, cm
1	3
2	5
3	10
4	20
5	35
6	36

Question 2: Sally recorded the number of cars in a car park every two hours. She began at 9am and finished at 7pm. The line graph shows her results.

- (a) When were the most cars in the car park?
- (b) How many cars were in the car park at 11am
- (c) At what time were there 24 cars in the car park?
- (d) Estimate the number of cars in the car park at 10am.
- (e) How many less cars were in the car park at 3pm than 1pm?

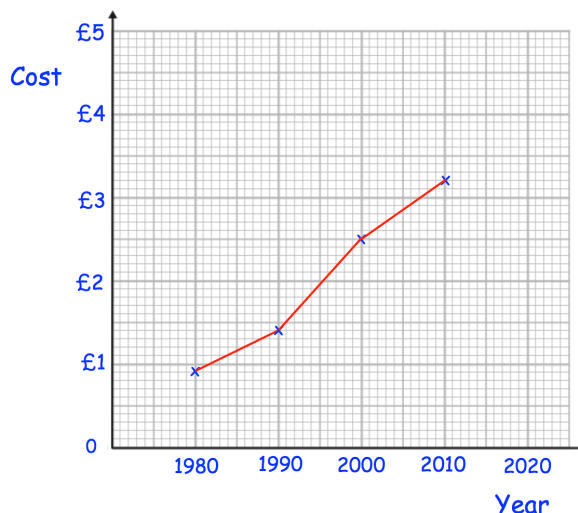


Question 3: The line graph below shows the cost of a coffee in a shop over 30 years.

- (a) In which year was the price £2.50?
- (b) How much was the price of a coffee in 1990?
- (c) Estimate the price of a coffee in 2005.

Carlos says that the price of a coffee will be £3.60 by 2020.

- (d) Do you agree with Carlos?
Explain your answer.



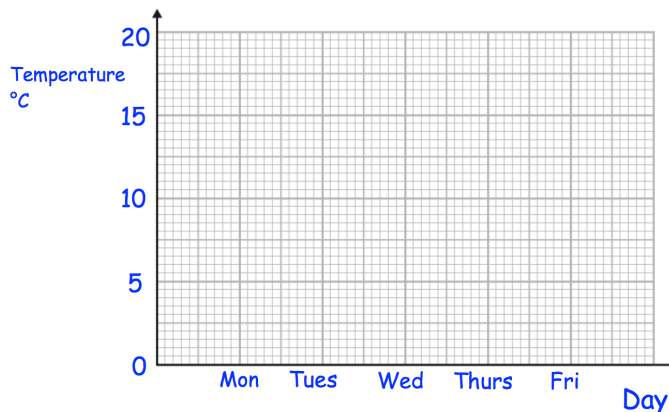
Line Graphs

Video 160 on www.corbettmaths.com

Question 4: The table below shows the average temperature in Belfast and Plymouth.

(a) Draw line graphs on the same axes to show the temperatures in Belfast and Plymouth.

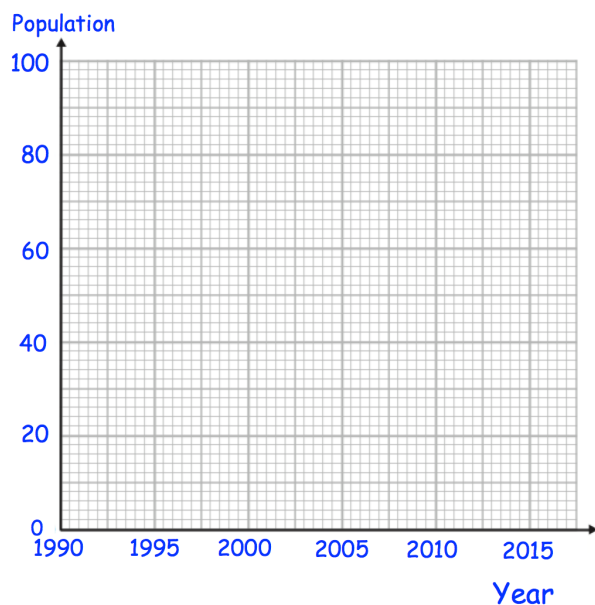
	Belfast	Plymouth
Monday	14°C	17°C
Tuesday	16°C	18°C
Wednesday	15°C	13°C
Thursday	10°C	12°C
Friday	9°C	10°C



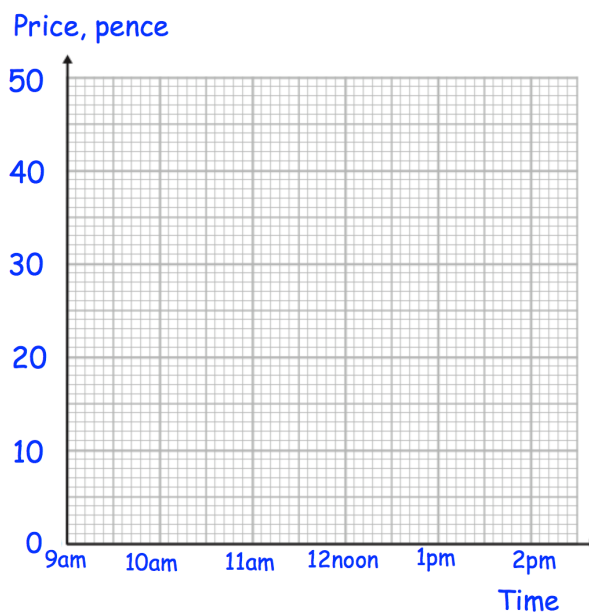
- (b) On which day did Belfast have a higher temperature than Plymouth?
- (c) Between which two consecutive days did the temperature in Belfast change the most?

Templates

Question 1(a)



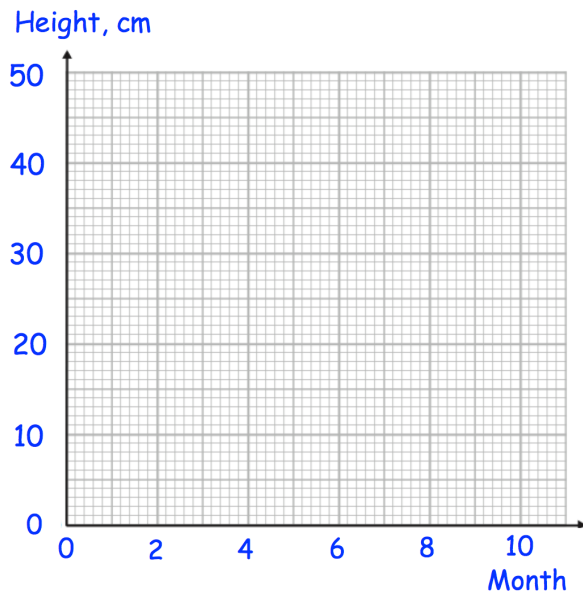
Question 1(b)



Line Graphs

Video 160 on www.corbettmaths.com

Question 1(c)



Question 4

