

April 8th	5-a-day	Numeracy
<p>Write 10% as a fraction in its lowest terms.</p> $\frac{1}{10}$	<p>Write 87% as a decimal</p> $0.87$	
<p>45% of pupils walk to school. What percentage do not walk to school?</p> $55\%$	<p>Write this fraction as a percentage</p> $\frac{7}{20} \quad 35\%$	
<p>Write 0.09 as a percentage</p> $9\%$	<p>Write 0.13 as a fraction</p> $\frac{13}{100}$	
<p>Calculate 25% of £800</p> $£200$	<p>Calculate 30% of \$80</p> $\$24$	
<p>Increase £6 by 5%</p> $£6.30$	<p>Decrease £60 by 20%</p> $£48$	

April 8th

5-a-day

Foundation

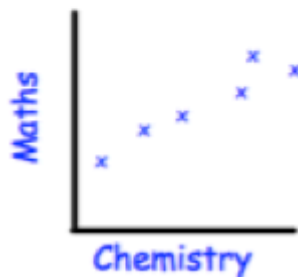
A bag contains one red bead and three yellow beads.

A bead is taken out 60 times and replaced each time.

$$\frac{1}{4}$$

How many red beads would you expect?

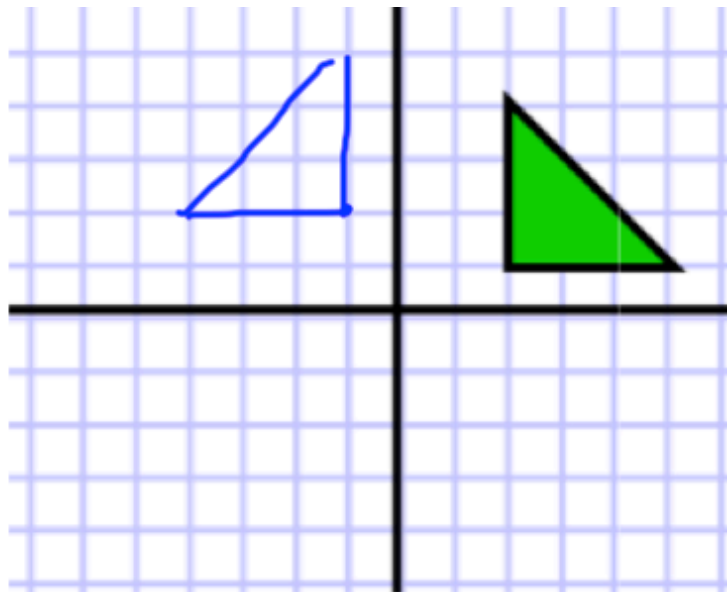
$$\frac{1}{4} \text{ of } 60 = 15 \text{ times}$$



Describe the relationship between maths and chemistry scores.

As chemistry increases so does maths.

positive correlation



Rotate the triangle, 90 degree anticlockwise about the origin.

Score	1	2	3	4
Frequency	20	12	21	12

What is the relative frequency of a 4?

$$20 + 12 + 21 + 12 = 65$$

$$\frac{12}{65}$$

Work out  $36^\circ$

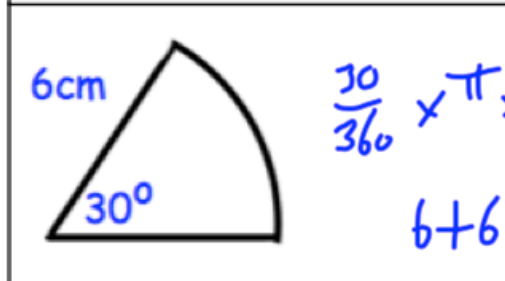
1

Work out  $49^{\frac{1}{2}}$

7

A coin is flipped three times.  
What is the probability of getting three tails?

T T T  
 $\frac{1}{2} \times \frac{1}{2} \times \frac{1}{2} = \frac{1}{8}$



Calculate the perimeter.  
 $\frac{30}{360} \times \pi \times 12 = \pi$   
 $6 + 6 + \pi = 12 + \pi = 15.1 \text{ cm}$

Solve  
 $\frac{x-1}{1} - \frac{6}{x-1} = 1$

$\frac{(x-1)(x-1) - 6}{x-1} = 1$   
 $x^2 - 2x + 1 - 6 = x - 1$   
 $x^2 - 3x - 4 = 0$   
 $(x-4)(x+1) = 0$   
 $x = 4$  or  $x = -1$

A sphere has radius 3cm.  
What is its volume?

$\frac{4}{3} \pi r^3$   
 $\frac{4}{3} \times \pi \times 27 = 36\pi \text{ cm}^3$   
 $113.1 \text{ cm}^3$