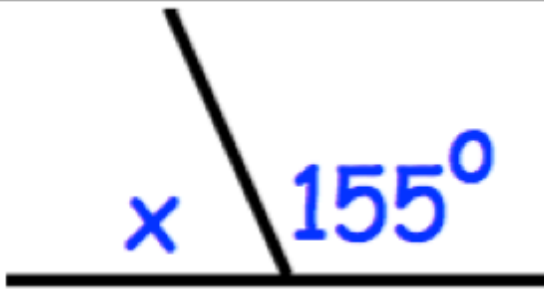
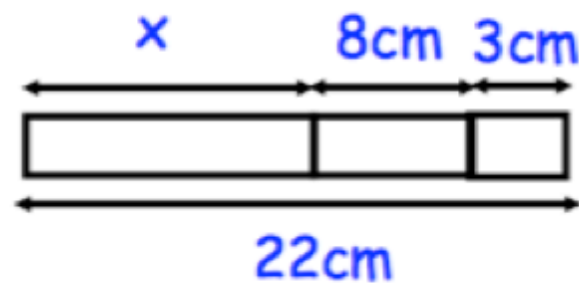


$$34 + 92$$

$$\begin{array}{r} 34 \\ + 92 \\ \hline 126 \end{array}$$



$$25^\circ$$



$$22 - 8 - 3 = 11\text{cm}$$

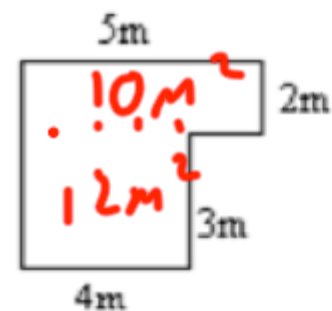
$$11\text{cm}$$

Round 8.19 to one decimal place

$$8.2$$

Round 6.43492 to one decimal place

$$6.4$$



What is the area of this shape?

$$22\text{m}^2$$

Solve $8w - 3 = 11$

$$8w = 14$$

$$w = 1.75$$

Solve $3(y - 4) = 9$

$$3y - 12 = 9$$

$$3y = 21$$

$$y = 7$$

Work out 2.31×1.9

$$4.389$$

John spends his day either awake or asleep in the ratio 5:3.
How long does he sleep for?

$$5 + 3 = 8$$

$$24 \div 8 = 3$$

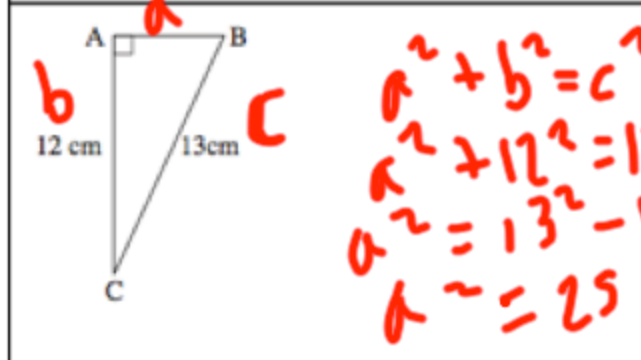
$$3 \times 3 = 9$$

15:9
9 hours

A plane travels due east.
On what bearing is it traveling?

$$90^\circ$$

A plane travels south-east.
On what bearing is it traveling?

$$135^\circ$$


Calculate the length of AB

$$a^2 + b^2 = c^2$$

$$a^2 + 12^2 = 13^2$$

$$a^2 = 13^2 - 12^2$$

$$a^2 = 25$$

$$a = 5 \text{ cm}$$

Factorise $x^2 + 12x + 35$

$(x + 7)(x + 5)$

Factorise $x^2 - 10x + 25$

$(x - 5)(x - 5)$

A bicycle wheel has diameter 80cm.
The bicycle travels 50m.

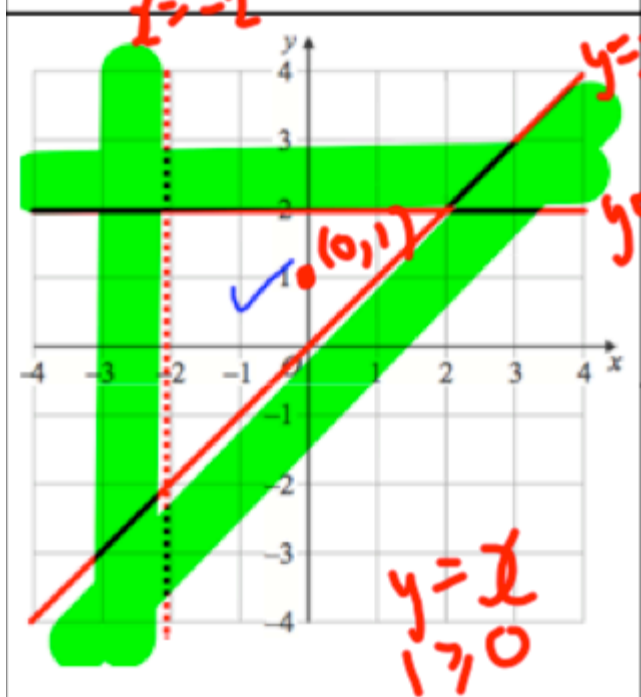
How many complete revolutions does the wheel make?

19

$\pi \times 0.8 = 2.51327..$

$50 \div 2.51327..$

$19.894..$



The diagram shows a region which satisfies 3 inequalities.

Find the inequalities

$x > -2$

$y \leq 2$

$y \geq x$

A square has side length 6cm measured to the nearest millimetre.

What is the upper limit of its area?

$60.5^2 = 3660.25 \text{ mm}^2$

60 mm

$60.5 \text{ mm (upper bound)}$