

Write 9083 in words

nine thousand and
eighty three

Write seven thousand and two in figures

7002

Write $\frac{1}{4}$ as a percentage

25%

Write 63% as a fraction

$\frac{63}{100}$

Time	Temperature
midnight	-6 °C
4 am	-10 °C
8 am	-4 °C
noon	7 °C
3 pm	6 °C
7 pm	-2 °C

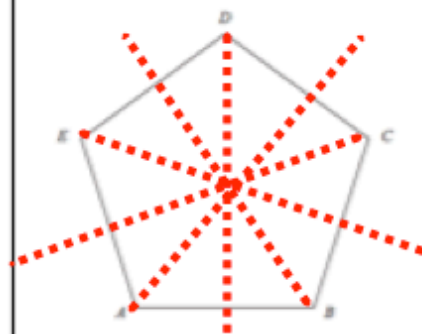
a) Write down the lowest temperature

-10 °C

b) What time was the highest temperature?

noon

Draw all the lines of symmetry for the regular pentagon ABCDE

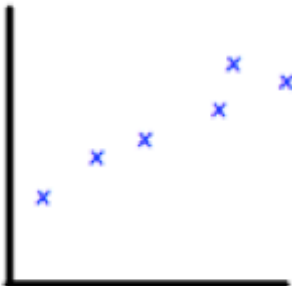


Work out 50% of £840

£420

Work out 10% of £74

£7.40

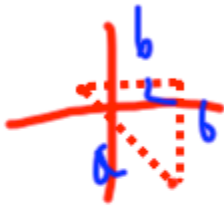
February 20th	5-a-day	Foundation
<p>Booklets are stored in piles of 100. Each booklet is 0.3cm thick.</p> <p>Calculate the height of one pile of booklets.</p>	100×0.3 $= 30 \text{ cm}$	
	<p>What type of correlation is shown?</p> <p>positive</p>	
<p>The sum of three consecutive numbers is 75.</p> <p>What are the numbers?</p>	$75 \div 3 = 25$ $24 \quad 25 \quad 26$	
<p>Hannah, Jasmin and Fred share £400 in the ratio 5:2:1.</p> <p>What is the difference between the amounts Hannah and Jasmin receive?</p>	$5+2+1=8$ $400 \div 8 = 50$ $50 \times 5 = 250$ $50 \times 2 = 100$	
<p>Estimate $\frac{5.01 \times 39.5}{3.89}$</p>	$\approx \frac{5 \times 40}{4} = \frac{200}{4}$ 50	

February 20

5-a-day

Higher

Calculate the distance between (-2, 1) and (4, -5).



$$a^2 = b^2 + b^2$$

$$a^2 = 72$$

$$a = 8.48 \dots$$

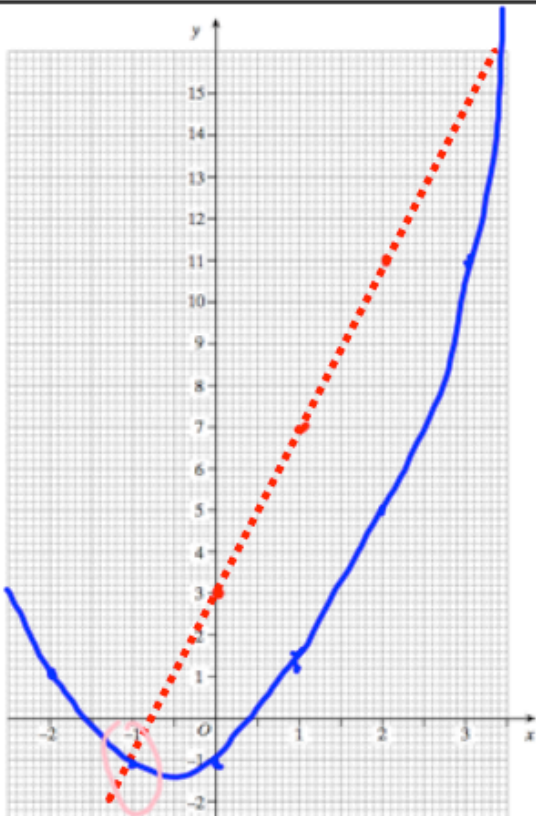
$$\text{or } 6\sqrt{2}$$

A particle travels at 20km/h.

What is this speed in metres per second?

$$20000 \text{ m/h}$$
$$333.3 \text{ m/min}$$

$$5.5 \text{ m/s}$$



Draw the graph $y = 4x + 3$

x	0	1	2	3	4
y	3	7	11	15	19

Draw the graph $y = x^2 + x - 1$

x	-2	-1	0	1	2	3	4
y	1	-1	-1	1	5	11	19

Write down the coordinates of where the two graphs intersect.

$$(-1, -1) \quad (4, 19)$$