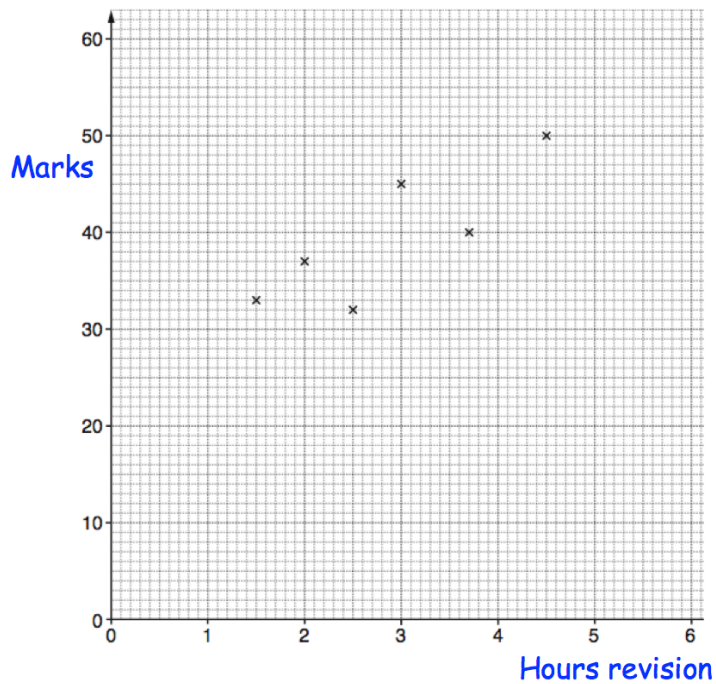


Name: \_\_\_\_\_

December 21

5-a-day

Foundation



Thomas revises for 4 hours.

Using the scatter graph, predict how many marks he will get?

Megan revises for 6 hours, why is it not sensible to use the scatter graph to predict how many marks she will get?

$$A = 6x + 3y$$

Work out the value of A when  $x = 5$  and  $y = -8$

Find x when  $y = 10$  and  $A = 18$ .

Expand and simplify

$$5(3y + 4) + 3(2y - 6)$$

Expand

$$3y(y^2 + 4y)$$