

January 23rd

5-a-day

Numeracy

Which of the fractions are equivalent to

$$\frac{3}{4}$$

$$\left(\frac{6}{8}\right) \quad \frac{10}{15} \quad \left(\frac{18}{24}\right)$$

Write

$$\frac{3}{4}$$

0.75

as a decimal

Write

$$\frac{3}{4}$$

75%

as a percentage

Donna has held a raffle to raise money for charity

She sold 90 tickets.

The prizes cost £16.

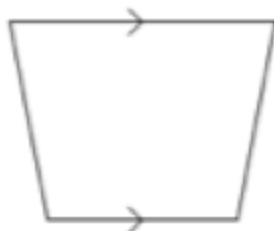
How much money did she raise?

Raffle Tickets

50p each

$$90 \times 50p = \pounds 45.00$$

$$45 - 16 = \pounds 29$$



Trapezium

Name this shape



hexagon

Name this shape

2 4 3 4 8 1 14

What is the median?

~~1~~ ~~2~~ ~~3~~ 4 ~~4~~ ~~8~~ ~~14~~

What is the mode?

↓
4

January 23

5-a-day

Foundation

$$\frac{3}{4} \times \frac{1}{5}$$

$$\frac{3}{20}$$

$$\frac{3}{4} + \frac{1}{5}$$

$$\frac{15}{20} + \frac{4}{20} = \frac{19}{20}$$

Increase £500 by 30%

$$10\% = \pounds 50$$

$$30\% = \pounds 150$$

$$\pounds 650$$

Solve

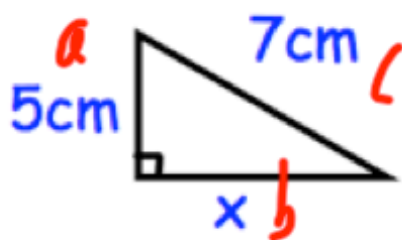
$$5y + 3 < 28$$

$$5y < 25$$

$$y < 5$$

$$a^2 + b^2 = c^2$$

Find x

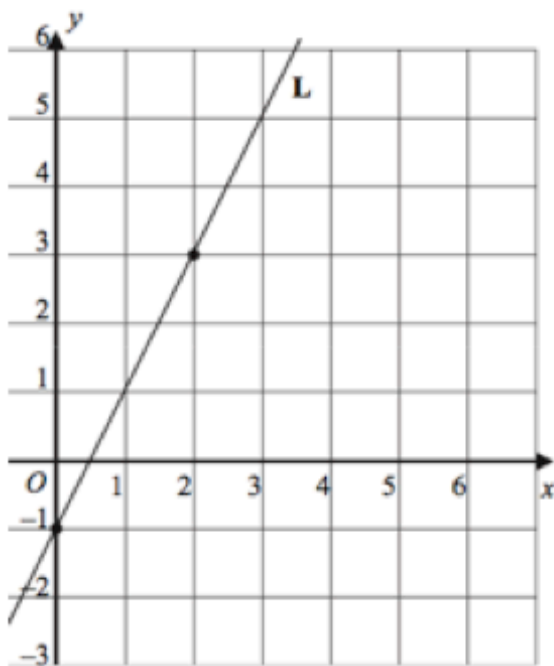


$$5^2 + x^2 = 7^2$$

$$25 + x^2 = 49$$

$$x^2 = 24$$

$$x = \sqrt{24} = 4.899 \text{ cm}$$

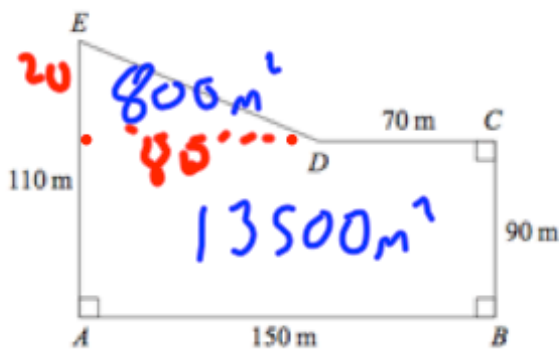


What is the gradient of the line L?

2

What is the equation of the line L?

$$y = 2x - 1$$



James is a pig farmer.
Each pig needs 20m^2

How many pigs can he keep in his field?

$$14300\text{m}^2 \div 20$$

715 pigs

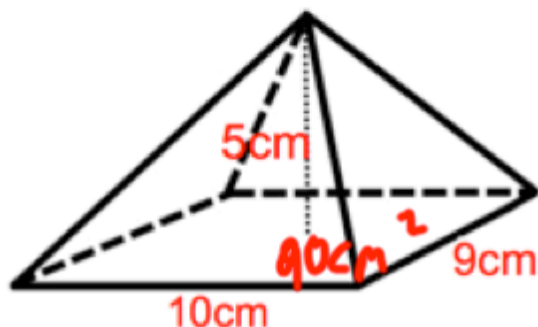
Speed (v km/h)	Frequency
$30 < v \leq 40$	20
$40 < v \leq 50$	76
$50 < v \leq 60$	68
$60 < v \leq 70$	28
$70 < v \leq 80$	8

700
3420
3740
1820
660

Calculate an estimate of the mean.

$$10280 \div 200$$

51.4



Calculate the volume of the pyramid.

$$\frac{1}{3}(90) \times 5$$

$$30 \times 5 = 150\text{cm}^3$$