

An apple costs 25p  
 What is the cost of 3 apples?  
75p

A banana costs 30p  
 David pays with 5p coins.  
 How many coins does he pay with?  
6

Ballymena	0657 0803 0903 1003
Cullybackey	0702 0808 0908 1008
Ballymoney	0730 0830 <span style="border: 1px solid red; padding: 2px;">0930</span> 1030

How long is the train journey from Ballymena to Ballymoney?  
27 or 33 mins

Laura lives in Ballymena.  
 She begins work in Ballymoney at 10am.  
 What time should she get the train in Ballymena?  
09:03

	Rotorua		
		Taupo	82
	Thames	213	159
Wanganui	436	231	313
Wellington	461	591	378
		378	460

The distances in the chart are in kilometres.  
 What is the distance from Wanganui to Rotorua?  
313 km

Find  $\frac{7}{10}$  of £40  
40 ÷ 10 = 4  
4 × 7 =

£28

Find 20% of 300 seconds.  
10% = 30  
20% = 60 seconds



What type of correlation is shown?

positive

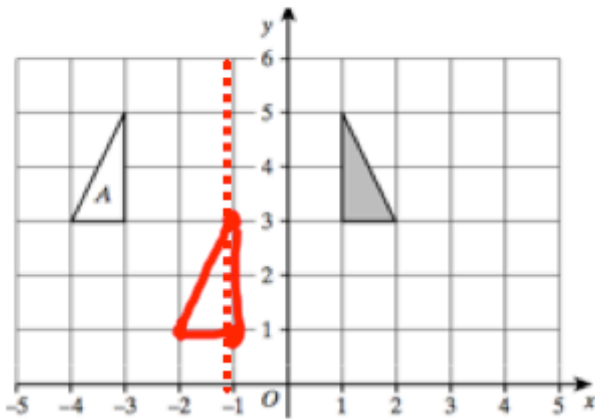
$$x = 7$$

Work out the value of

$$\frac{(1+x)^2}{2}$$

$$\frac{(7+1)^2}{2} = \frac{8^2}{2}$$

$$\frac{64}{2} = 32$$



Describe the single transformation that takes A to the shaded triangle.

reflection in mirror line  
 $x = -1$

Translate A by translation vector.

$$\begin{pmatrix} 2 \\ -1 \end{pmatrix} \begin{matrix} 2 \text{ right} \\ 1 \text{ down} \end{matrix}$$

Simplify

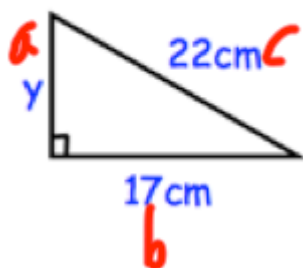
$$x^5 \times x^{-2}$$

$$x^3$$

January 24

5-a-day

Higher



Find  $y$ .

$$a^2 + b^2 = c^2$$

$$y^2 + 17^2 = 22^2$$

$$y^2 + 289 = 484$$

$$y^2 = 195$$

$$y = 13.96 \text{ cm}$$

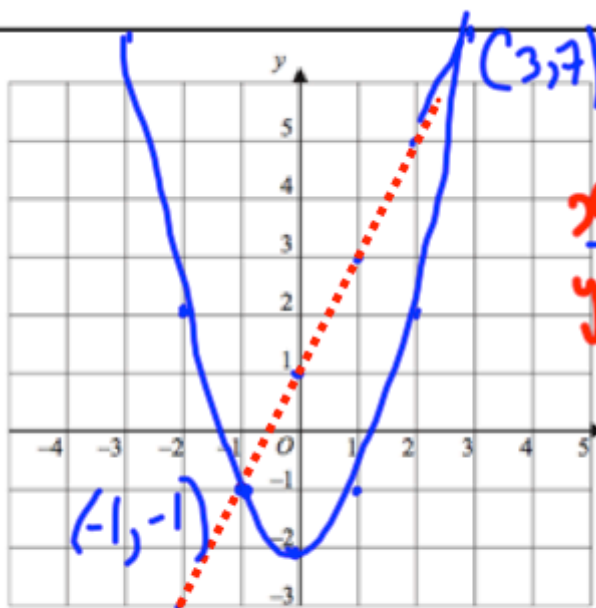
An island's population is decreasing by 4% a year.

In 2000, the population was 209000

Work out the population in 2015.

$$209000 \times 0.96^{15}$$

$$113296$$



$$y = x^2 - 2 \quad y = 2x + 1$$

$x$	-3	-2	-1	0	1	2	3
$y$	7	2	-1	-2	1	3	5

$x$	1	2	3
$y$	-1	2	7

$$(-1, -1) \quad (3, 7)$$

Draw  $y = x^2 - 2$  and draw  $y = 2x + 1$ .

Write down the coordinates of where the two graphs intersect.

Simplify

$$\frac{x^2 - 9}{x^2 - 9x + 18}$$

$$\frac{(x+3)(x-3)}{(x-6)(x-3)}$$

$$\frac{x+3}{x-6}$$