

June 3rd

5-a-day

Numeracy

List the square numbers under 90.

1 4 9 16 25
36 49 64 81

List the prime numbers under 10.

2 3 5 7

Write the value of the 5 in the number

57409

50000
fifty thousand.

$\frac{1}{2}$ of £36 £18

$\frac{1}{4}$ of £60 £15

Which is larger?

$\frac{1}{2}$ of £36

M. M. ~~W~~ ~~C~~
~~C~~ M. ~~C~~ ~~W~~
~~W~~ ~~C~~ ~~C~~ M.

Complete the tally chart below.

Which letter appears the least?

Type of person	Tally	Frequency
Man (M)		4
Woman (W)		3
Child (C)	 	5

Expand

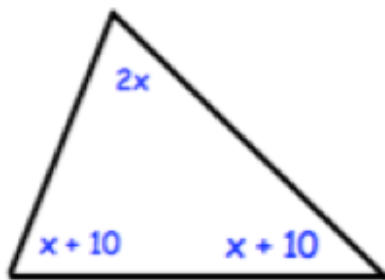
$$y(3y - 1)$$

$$3y^2 - y$$

$$\frac{2}{3} - \frac{1}{7}$$

$$\frac{14}{21} - \frac{3}{21}$$

$$= \frac{11}{21}$$



Write down an equation from the information given

$$4x + 20 = 180$$

Solve the equation to find x

$$4x + 20 = 180$$

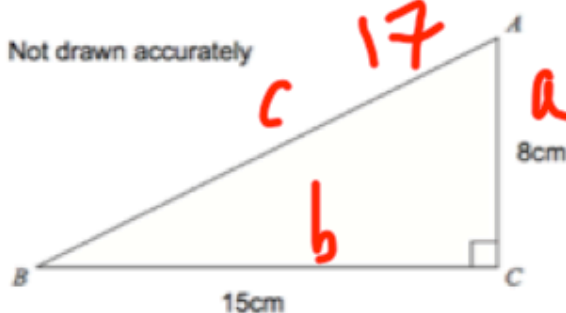
$$4x = 160$$

$$x = 40$$

Write down the size of each angle

$$80, 50, 50$$

Not drawn accurately



Find the perimeter of the triangle

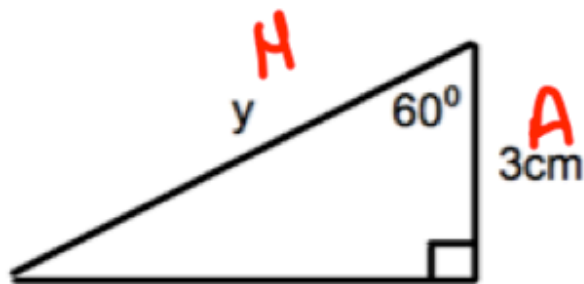
$$a^2 + b^2 = c^2$$

$$8^2 + 15^2 = c^2$$

$$64 + 225 = c^2$$

$$c = \sqrt{289}$$

$$\text{Perimeter: } 8 + 15 + 17 = 40\text{cm}$$

Calculate length y

$$\frac{3}{\cos 60} = 6\text{cm}$$

Expand $4y^2(2y - 1)$

$$8y^3 - 4y^2$$

Solve

$$x^2 + 5x - 24 = 0$$

$$(x + 8)(x - 3) = 0$$

$$x = -8$$

or

$$x = 3$$

Solve the simultaneous equations

$$x + y = 1$$

$$2x - y = 11$$

+

$$3x = 12$$

$$x = 4$$

$$x + y = 1$$

$$4 + y = 1$$

$$y = -3$$

check

$$2(4) - (-3) = 11$$

$$8 + 3 = 11 \checkmark$$

Factorise

$$y^2 - 9$$

$$(y - 3)(y + 3)$$