

Write the number four thousand and sixteen in figures

4016

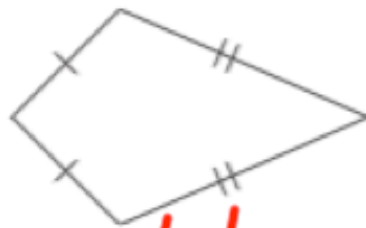
Write 8355 to the nearest hundred

8000

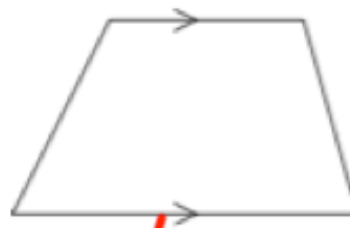
67 4 109 38 73

Write these numbers in order of size. Start with the smallest.

4 38 67 73 109



Name.....kite.....



Name.....trapezium.....

The first four terms in a sequence are

+3

2 5 8 11

If the 19th term in the sequence is 56. What is the 23rd?

19 20 21 22 23
56 59 62 65 68

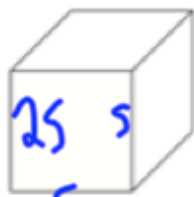
68

Write 0.3 as a fraction

$\frac{3}{10}$

Write 25% as a fraction

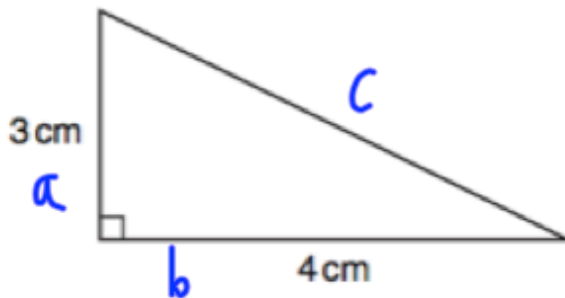
$\frac{1}{4}$



A cube has side length 5cm.

Calculate the surface area

$$\begin{array}{r} 25 \\ \times 6 \\ \hline 150 \end{array} \quad 150 \text{cm}^2$$



Calculate the area of this triangle

$$\frac{1}{2} b \times h$$

$$\frac{1}{2} \times 4 \times 3 = 6 \text{cm}^2$$

Calculate the length of the diagonal

$$a^2 + b^2 = c^2$$

$$3^2 + 4^2 = c^2$$

$$9 + 16 = c^2$$

$$25 = c^2$$

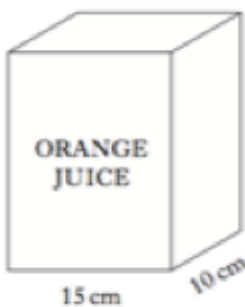
$$\sqrt{25} = c$$

$$c = 5 \text{cm}$$

Draw a stem and leaf diagram

~~28~~ ~~38~~ ~~19~~ ~~33~~
~~32~~ ~~37~~ ~~41~~ ~~27~~
~~45~~ ~~23~~ ~~44~~ ~~38~~

1 | 9 119 means 19
 2 | 3 7 8
 3 | 2 3 7 8 8
 4 | 1 4 5



$$15 \times 10 \times 20 = 3000 \text{cm}^3$$

A glass holds 120cm³
 How many glasses can be filled?

$$3000 \div 120 = 25$$

25

March 16th	5-a-day	Higher
Simplify $(3x^2y^3)^2$	$9x^4y^6$	
Find the greatest and least total length of 8 sticks, each 6cm to the nearest cm. $5.5 \quad 6 \quad 6.5$	Least length = <u>44cm</u> Greatest length = <u>52cm</u>	
Evaluate $10^{-2} \times 64^{\frac{1}{2}}$ $\frac{1}{10} \times \sqrt{64}$ $\frac{1}{10} \times 8$	$\frac{8}{100} = \frac{4}{50} = \frac{2}{25}$ or 0.08	
The force exerted by a magnet is inversely proportional to the square of the distance. When $d = 5$, $F = 8$. $F \propto \frac{1}{d^2}$ $F = \frac{k}{d^2} \quad 8 = \frac{k}{5^2}$	Find F when $d = 3$ $8 = \frac{k}{25} \quad k = 200$ $F = \frac{200}{d^2}$ $F = \frac{200}{3^2} = 22.\bar{2}$	
Write the cube root of y in index form $y^{\frac{1}{3}}$		