

May 25th

5-a-day

Numeracy

List the square numbers between 20 and 60.

25 36 49

List the prime numbers between 20 and 30.

23 29

Give an event where you think the probability is evens.

Tails on a coin

1, 2 or 3 on a dice

baby being a boy

$-2 - 7$

$-9$

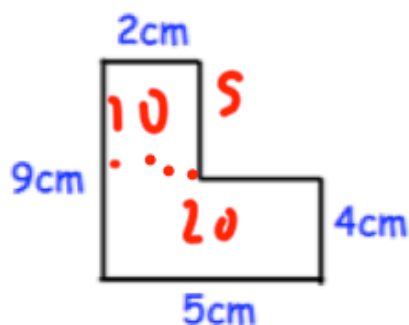
$-7 + 5 + 8$

$6$

Solve

$$w - 5 = 12$$

$$w = 17$$



Calculate the area

$30\text{cm}^2$

Estimate  $25.7 \times 6.4$

$$30 \times 6 = 180$$

$$25 \times 6 = 150$$

$$26 \times 6 = 156$$

Mrs Jenkins gives £400 to her children Ally, Barry and Cat in the ratio 1:2:5.

How much do they each receive?

$$1 + 2 + 5 = 8$$

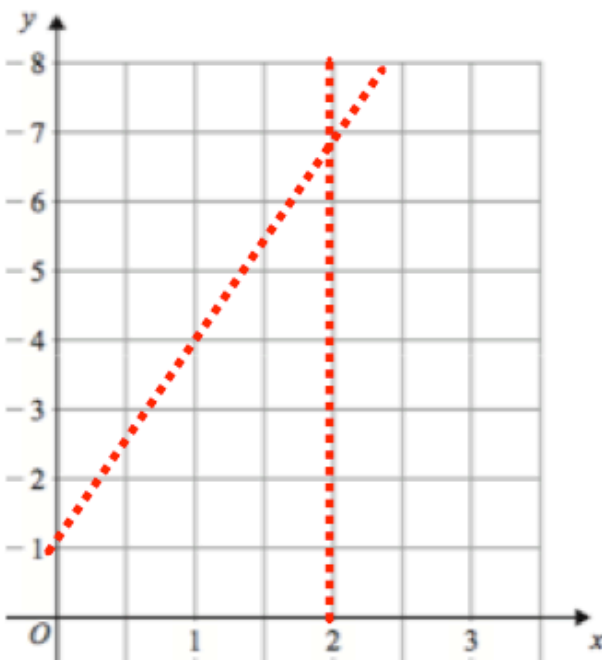
$$400 \div 8 = 50$$

$$1 \times 50 = \pounds 50 \text{ Ally}$$

$$2 \times 50 = \pounds 100 \text{ Barry}$$

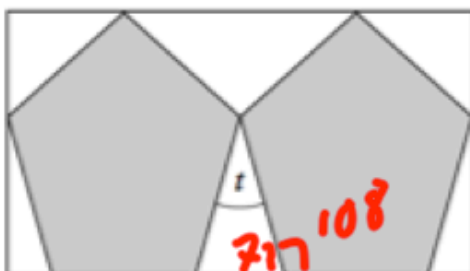
$$5 \times 50 = \pounds 250 \text{ Cat}$$

$$\pounds 400$$



Draw the graph  $y = 3x + 1$

Draw the graph  $x = 2$



Shown is two congruent regular pentagons inside of a rectangle.

Find  $t$

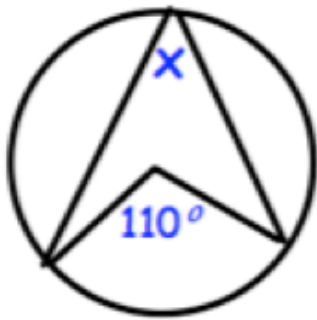
$$72 + 72 = 144$$

$$180 - 144 = 36^\circ$$

May 25

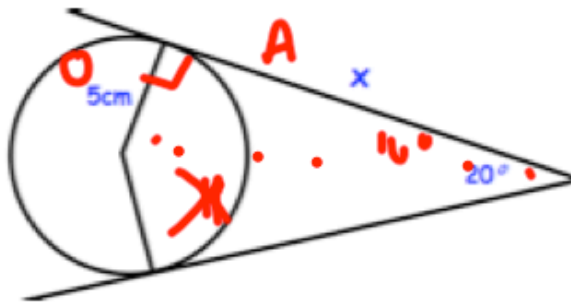
5-a-day

Higher



Calculate angle x

$$55^\circ$$



Calculate the length of x.

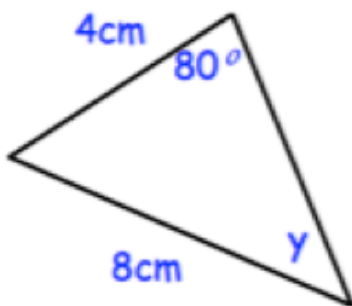
$$\frac{5}{\tan 10} = 28.36 \text{ cm}$$

Solve

$$5x^2 - 11x + 2 = 0$$

$$(5x - 1)(x - 2) = 0$$

$$x = 0.2 \quad \text{or} \quad x = 2$$



Calculate y

$$\frac{\sin 80}{8} = \frac{\sin y}{4}$$

$$\sin y = 0.49 \dots$$

$$y = 29.499$$

Simplify

$$\frac{x}{x+3} \times \frac{3}{2x}$$

$$\frac{3x}{2x(x+3)}$$

$$\frac{3}{2(x+3)}$$

$$\text{or } \frac{3}{2x+6}$$