

21st Feb



Corbettmaths

$$\int (x + 3)(x + 7) dx$$

$$y = 2x^3 + \frac{4}{\sqrt{x}}$$

Find

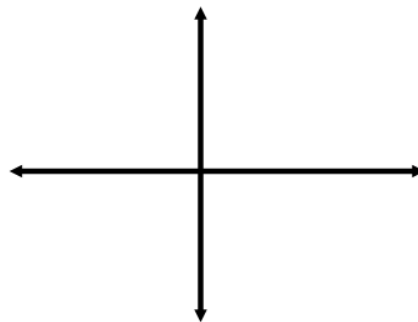
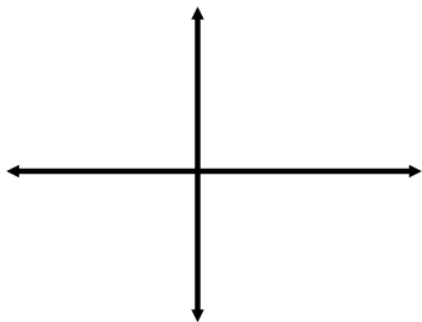
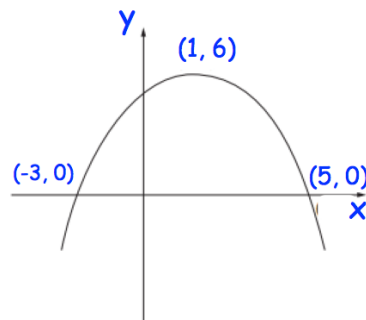
$$\frac{d^2y}{dx^2}$$

Shown is the graph of $y = f(x)$

Sketch

a) $y = 3f(x)$

b) $y = f(x - 3)$



The first three terms of an arithmetic progression are:

$$7p, 2p + 12, 21 - p, \dots$$

Find p