

27th Feb



Corbettmaths

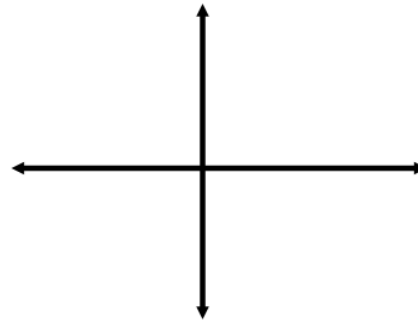
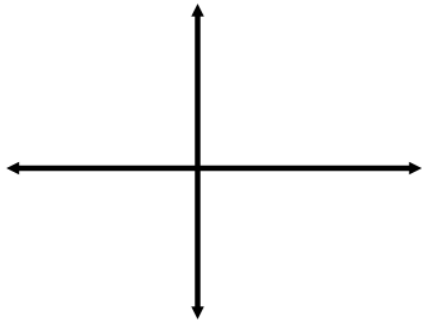
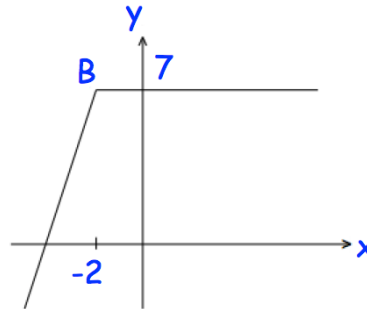
Rationalise

$$\frac{2 + \sqrt{3}}{3 - \sqrt{2}}$$

Shown is the graph of $y = f(x)$
 B has coordinates $(-2, 7)$

Sketch

- a) $y = f(x + 1)$
 b) $y = f(2x)$



James is training for a charity cycle.
 He goes for a cycle every Sunday,
 starting with a distance of 6km.
 Each Sunday he increases the length of
 his cycle by 1.2km.

Find how far he cycles on the 10th
 Sunday.

Find the total distance cycled over the 10
 Sundays.