

9th May



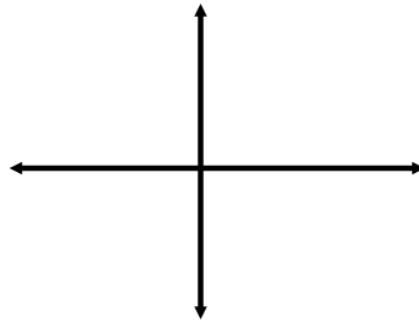
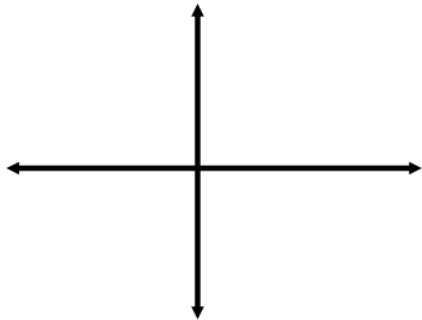
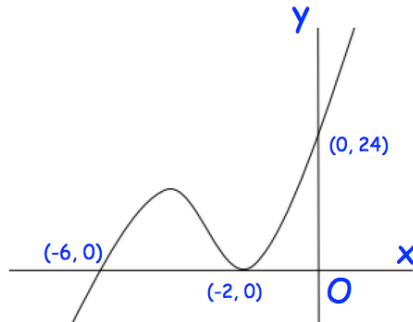
Corbettmaths

Write $\sqrt{125}$ in the form $a\sqrt{5}$ Shown is the curve $y = f(x)$.

Sketch

(a) $y = 2f(x)$

(b) $y = f(2x)$

State the equation for the curve $y = f(x)$ shown aboveThe curve with equation $y = f(x)$ passes through the point $(1, 2)$

Given

$$f'(x) = \frac{(2x + 1)(x + 3)}{\sqrt{x}}$$

Find $f(x)$