

Name: _____

Exam Style Questions



Flow Charts

Corbettmaths

Ensure you have: Pencil, pen, ruler, protractor, pair of compasses and eraser

You may use tracing paper if needed

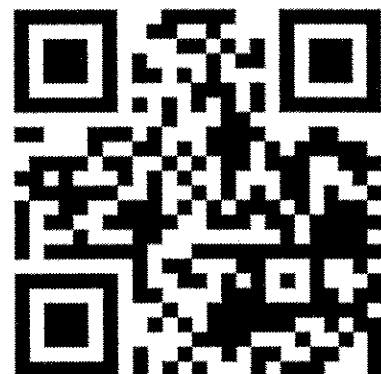
Guidance

1. Read each question carefully before you begin answering it.
2. Don't spend too long on one question.
3. Attempt every question.
4. Check your answers seem right.
5. Always show your workings

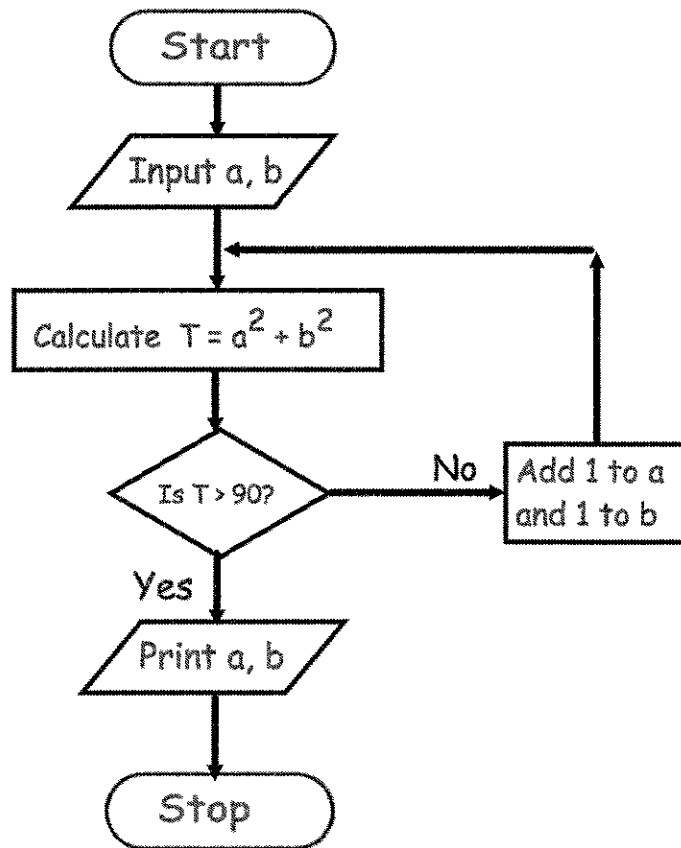
Revision for this topic

www.corbettmaths.com/contents

Video 364



1.

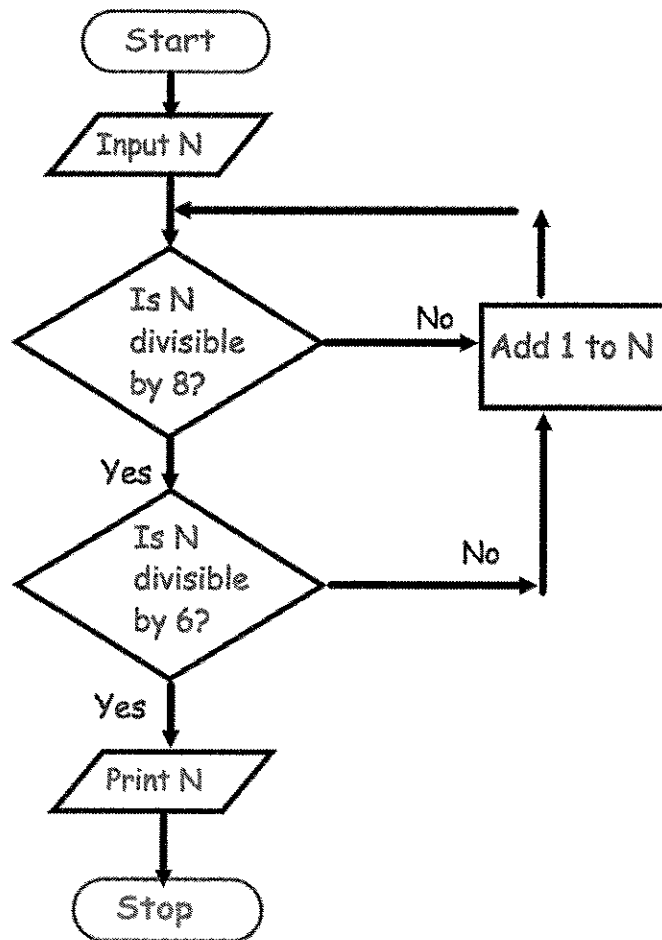


Starting with $a = 3$, $b = 1$ use the flow chart to find the values printed.

a	b	T
3	1	10
4	2	20
5	3	34
6	4	52
7	5	74
8	6	100

Answer a = 8, b = 6
(3)

2.

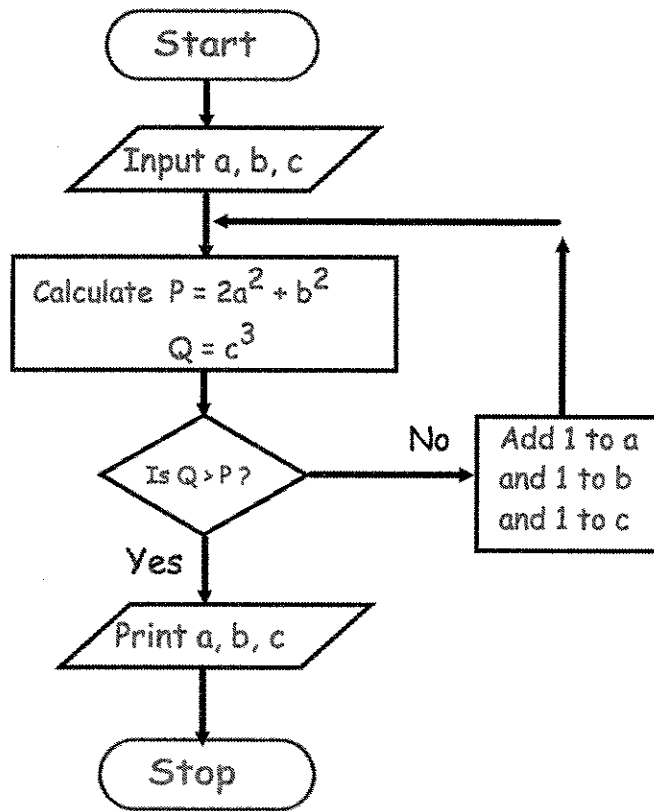


Starting with $N = 30$, use the flow chart to find the number printed.

- 32 x
- 40 x
- 48 ✓
- ~~56~~
- 64
- 72
- 80
- 88

Answer Number Printed =48.....
(2)

3.



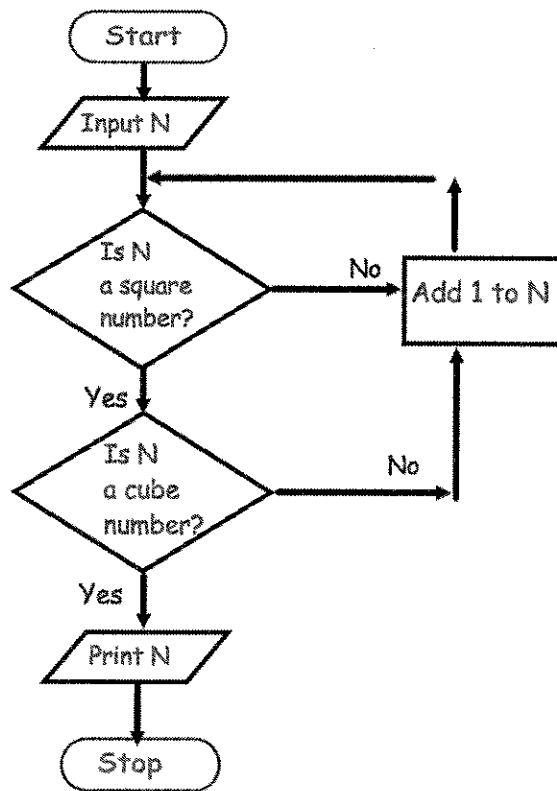
Starting with $a = 5$, $b = 3$, $c = 1$ use the flow chart to find the values printed.

a	b	c	P	Q
5	3	1	59	1
6	4	2	88	8
7	5	3	123	27
8	6	4	164	64
9	7	5	211	125
10	8	6	264	216
11	9	7	323	343 ✓

Answer $a = \dots 11 \dots$, $b = \dots 9 \dots$, $c = \dots 7 \dots$

(3)

4.



Starting with $N = 20$, use the flow chart to find the number printed.

- 25 X
- 36 X
- 49 X
- 64 ✓

Answer Number Printed =64.....
(2)