

Name: \_\_\_\_\_

Exam Style Questions



# Reading Scales

Corbettmaths

Ensure you have: Pencil, pen, ruler, protractor, pair of compasses and eraser

You may use tracing paper if needed

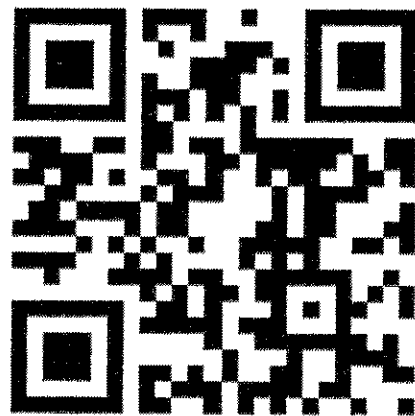
## Guidance

1. Read each question carefully before you begin answering it.
2. Don't spend too long on one question.
3. Attempt every question.
4. Check your answers seem right.
5. Always show your workings

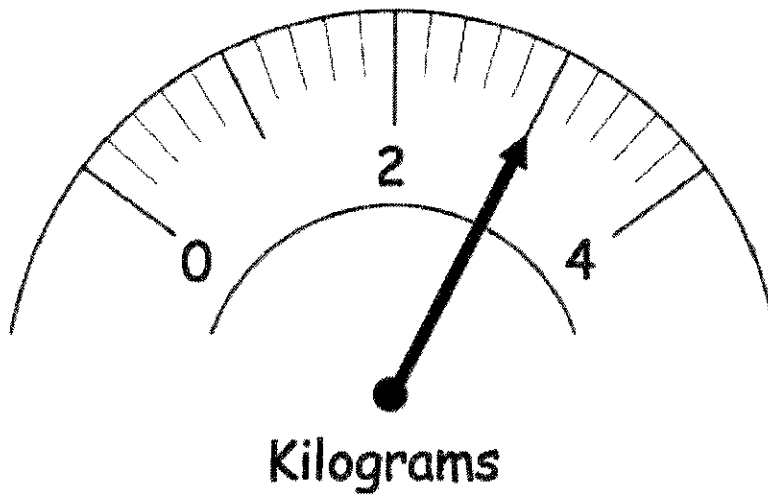
Revision for this topic

[www.corbettmaths.com/contents](http://www.corbettmaths.com/contents)

# Video 284



1. Martha is buying carrots.  
The scale shows the amount she buys



- (a) What amount of carrots does she buy?

..... 3 kg ..... kg  
(1)

- (b) Martha can use the scale to weigh 15 kilograms of apples.  
Explain how she can do this.

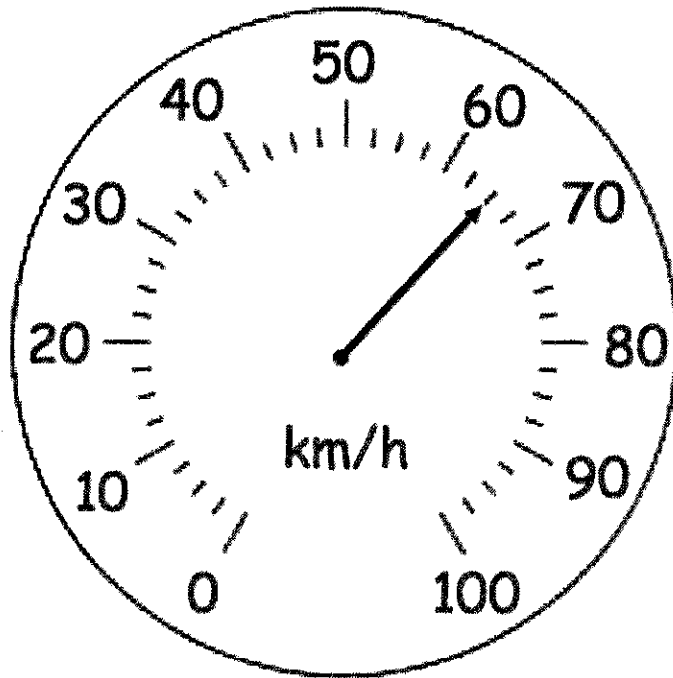
..... She could measure five lots of 3 kg. ....

..... or .....

..... She could measure three lots of 4 kg and then  
..... one lot of 3 kg. ....

(1)

2. The diagram shows the speed a car is travelling.



(a) What speed is the car travelling?

65 .....km/h  
(1)

The speed limit on the road is 80 kilometres per hour.

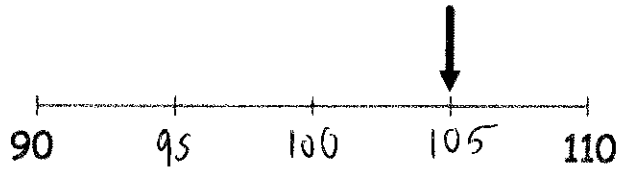
(b) How many kilometres per hour slower than the speed limit is the car travelling?

$$80 - 65$$

15 .....km/h  
(1)

3. Write down the value shown on each scale.

(a)



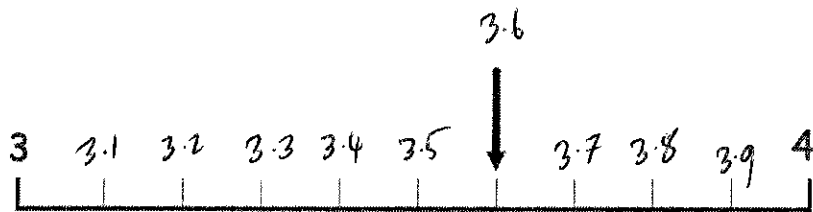
105  
-----  
(1)

(b)



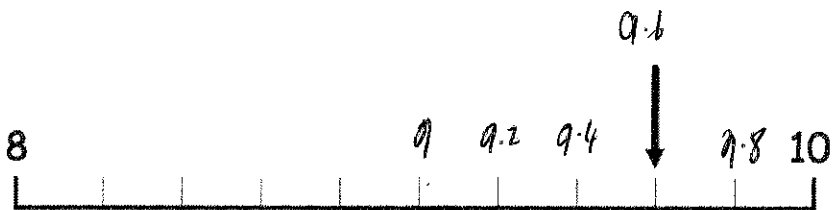
6  
-----  
(1)

(c)



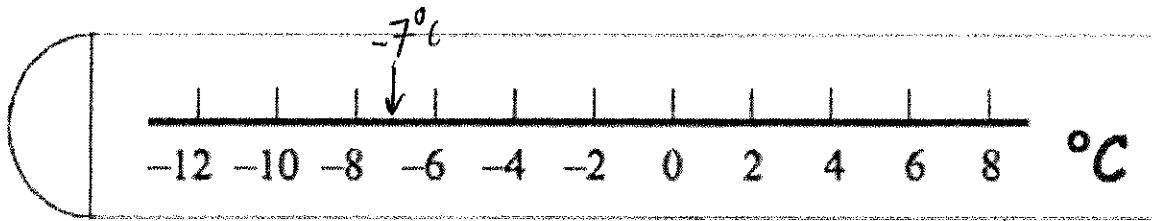
3.6  
-----  
(1)

(d)



9.6  
-----  
(1)

4. Shown below is a thermometer.

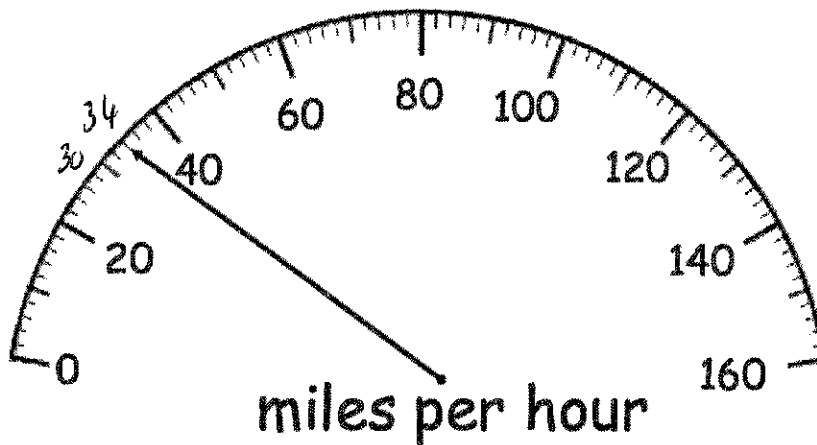


The temperature is  $-7^{\circ}\text{C}$ .

Show this temperature on the thermometer with an arrow.

(1)

5. The speedometer shows the speed a car is travelling on a road.



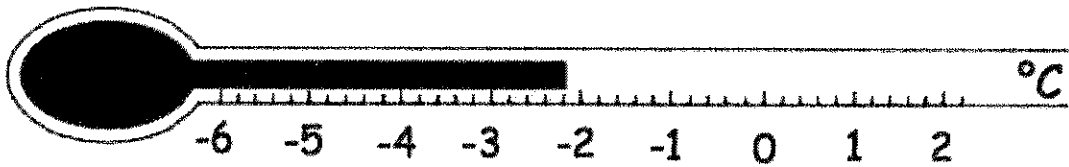
The car joins a motorway and its speed increases by 25 miles per hour.

What speed is the car travelling on the motorway?

$$34 + 25 = 59$$

~~34~~ 59 mph  
.....mph  
(2)

6. Shown below is a thermometer.



(a) Write down the temperature shown on the thermometer

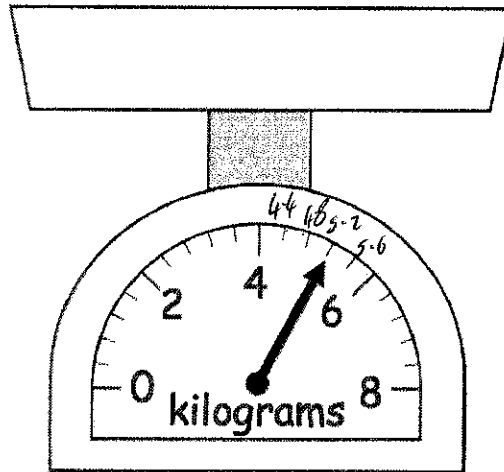
- 2.2  
.....°C  
(1)

The temperature rises by 4°C

(b) Work out the new temperature.

1.8  
.....°C  
(1)

7. Gregory is buying flour.



The scales show how much flour Gregory buys.

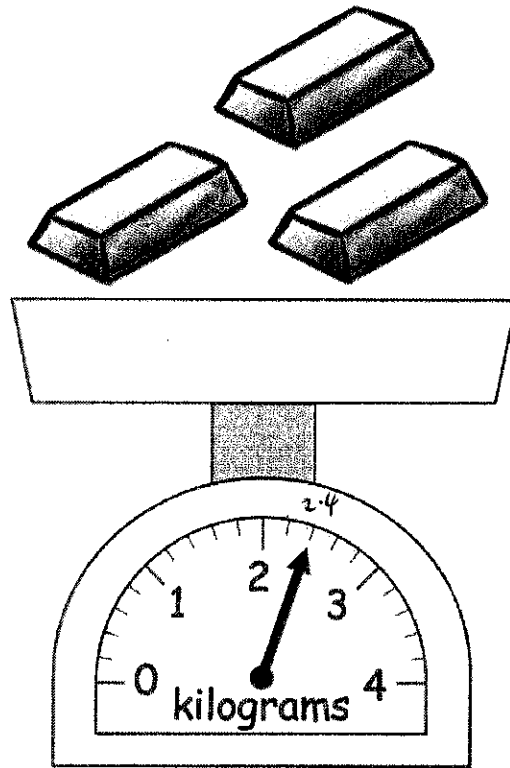
(a) How much flour does Gregory buy, in kilograms?

5.2  
.....kg  
(1)

(b) How much flour does Gregory buy, in grams?

5200  
.....g  
(1)

8. Three identical gold bars are placed on a set of scales.



Work out the weight of one bar of gold.  
Include units.

$$2.4 \text{ kg} \div 3$$

$$\begin{array}{r} 0.8 \text{ kg} \\ \hline (3) \end{array}$$