

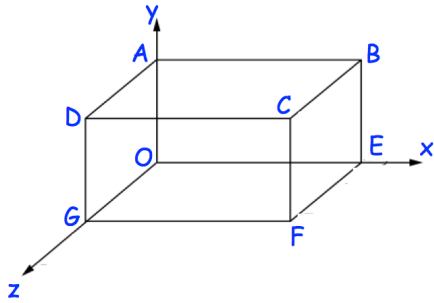
19th April



Corbettmaths

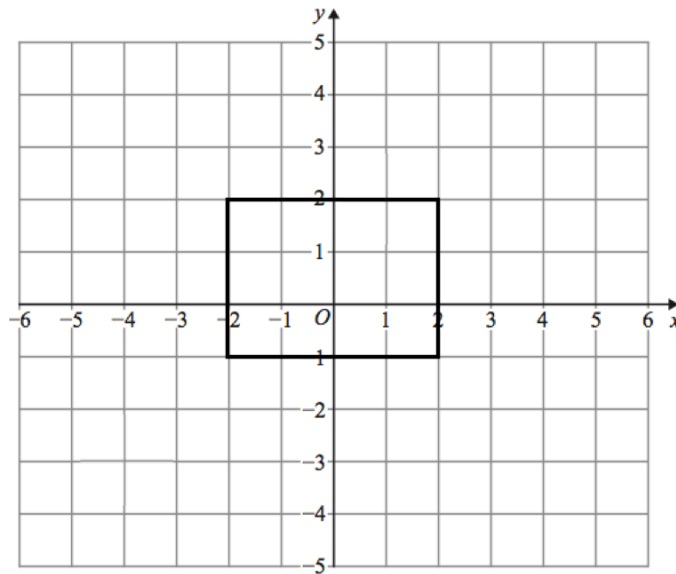
Write 53000000000 in standard form.

Write 6.24×10^{-4} as an ordinary number.

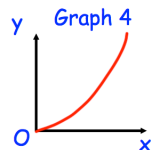
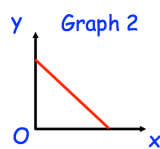
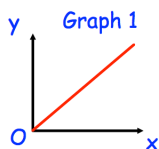


This diagram shows a cuboid drawn on a 3D grid. C has coordinates (5, 2, 3).

Write down the coordinates of the point F.



Enlarge the rectangle by scale factor $\frac{1}{2}$, using centre of enlargement (6, 0).



One of the graphs could show that y is inversely proportional to x .

Which graph?