

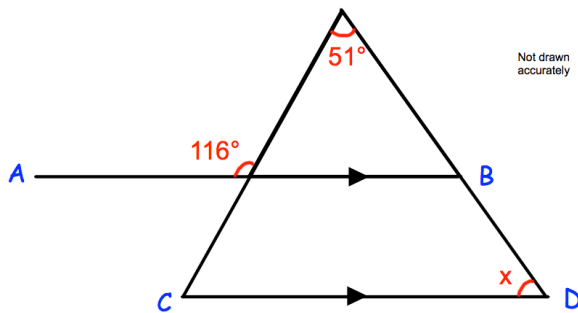
20th August



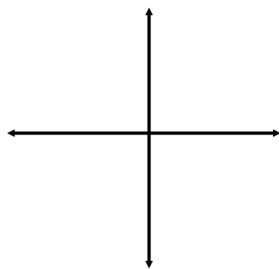
Corbettmaths

Use approximations to estimate the value of

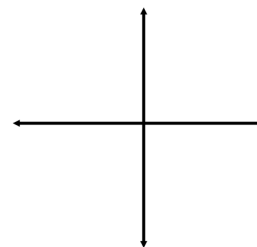
$$\frac{4.12 \times 1.89}{0.21}$$



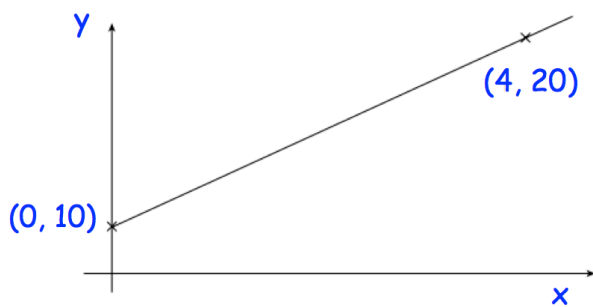
In the diagram, AB is parallel to CD. Work out the size of angle x.



Sketch  $y = x^3$

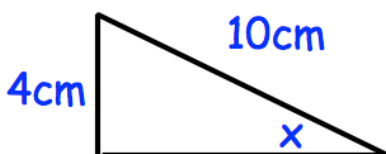


Sketch  $y = \frac{1}{x}$  where  $x \neq 0$



Find the equation of this line

Shown is a right angled triangle.



Find angle x.