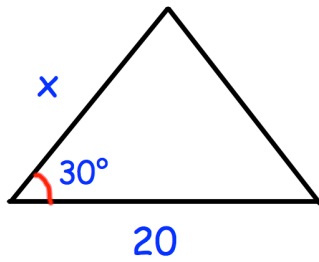


23rd August

Corbettmaths



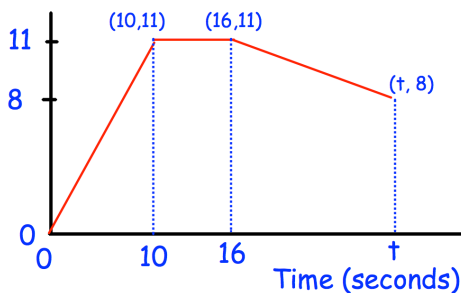
Find the area of the triangle in terms of x .

Given

$$y = \frac{5\sqrt{3}}{2}$$

Write an expression for y^3

Speed (m/s)

Find t

The average speed from 0 to t seconds was 8.725m/s

Find the deceleration for the final stage of the journey

The point $(-5, 1)$ is the turning point of the graph of $y = x^2 + ax + b$

Find a and b