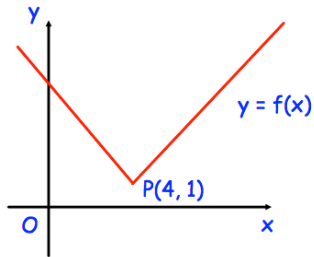


24th August

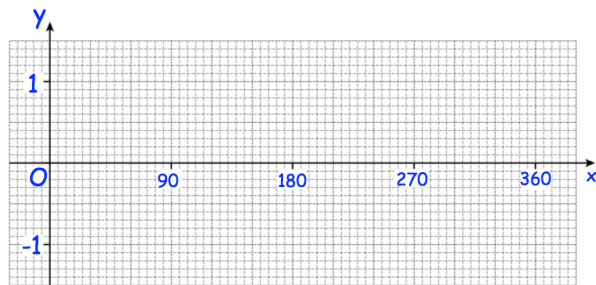
Corbettmaths

Solve $x^2 - 8x + 15 \leq 0$



What are the coordinates of the new position of P when the graph $y = f(x)$ is transformed to the graph of $y = -f(x)$?

Sketch the graph of $y = \sin x$ for $0 \leq x \leq 360$.



The cost of two TVs are in the ratio $x:y$

When both prices are increased by £40, the ratio is 13:20

When both prices are decreased by £100, the ratio is 8:15

Find the values of x and y