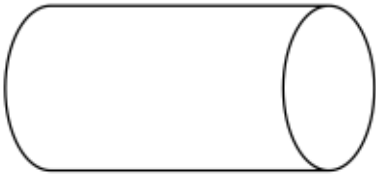


27th August

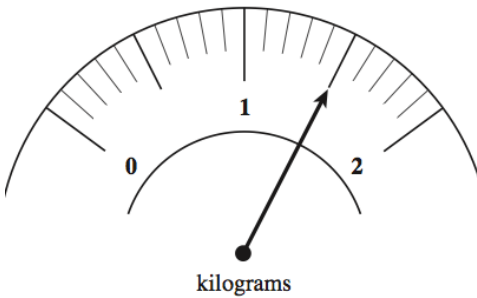
Corbettmaths



Name _____



Name _____



How much flour is on the scale?
Give your answer in kilograms.

Give your answer in grams.

There are 135 pupils in Year 9 at a school

$\frac{2}{5}$ of these students are blonde.

How many students are blonde?

Write 34.8 correct to the nearest whole number.

Write 6.3 correct to the nearest whole number.

A bus leaves Bristol at 10:05 and arrives in Birmingham at 12:40.

How long does the journey last?