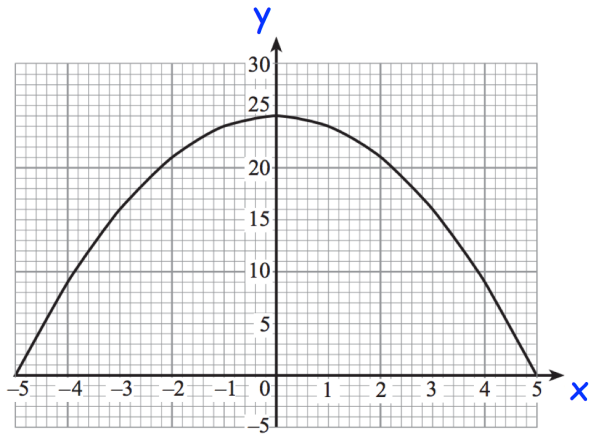


13th December

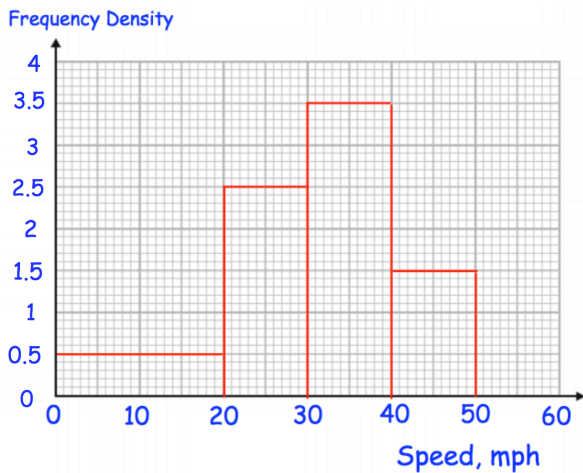


Corbettmaths



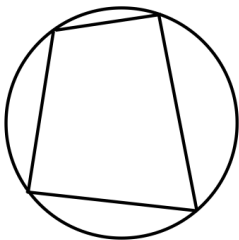
Calculate an estimate of the gradient of the curve at the $x = -3$

Find an estimate of the area between the curve and the x-axis between $x = -5$ and $x = 5$



Find an estimate of the median

Two cars are selected at random. Calculate the probability that both cars have a speed greater than 40mph



Prove the opposite angles in a cyclic quadrilateral add to 180°