

30th December



Corbettmaths

The weight of a bag of potatoes is 18kg, correct to the nearest kg.

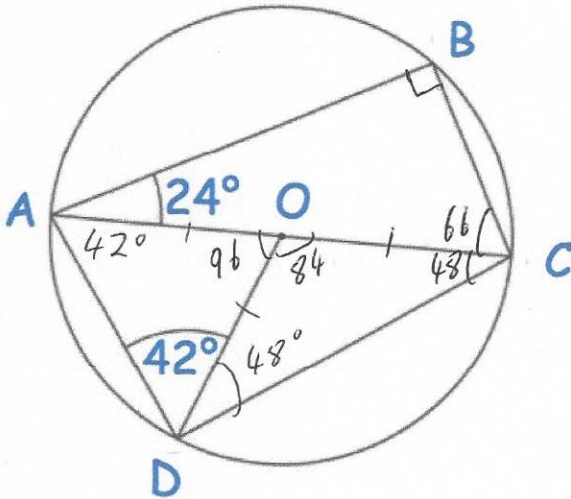
Write down the smallest possible weight of the bag of potatoes.

17.5 kg

Write down the highest possible weight of the bag of potatoes.

18.5 kg

$$17.5 \leq x < 18.5$$



O is the centre of the circle.
AC is the diameter.

Find angle OAD.

42°

Find angle BCA

66°

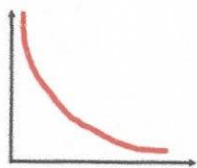
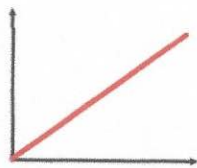
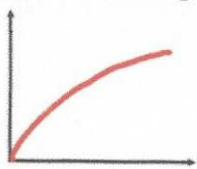
Find angle BCD.

114°

Find angle OCD.

48°

Match each graph to the correct relationship.



$y \propto \frac{1}{x}$

$y \propto \sqrt{x}$

$y \propto x$