

27th December



Corbettmaths

Expand and simplify

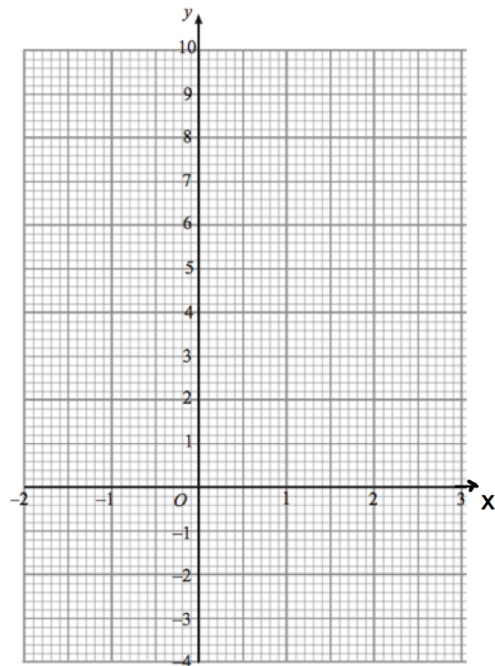
$$(y - 2)(2y + 5)$$

$$x = 2y + 3$$

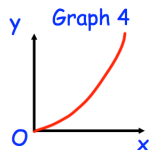
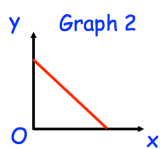
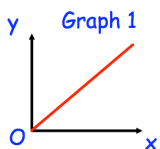
Rearrange the formula to make y the subject

Complete the table of values for $y = x^2 - 1$

x	-2	-1	0	1	2	3
y	3		-1		3	



On the grid, draw the graph of $y = x^2 - 1$ for the values of x from -2 to 3.



One of the graphs shows that y is inversely proportional to x .

Which graph?