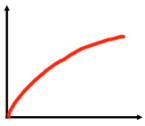
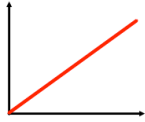


23rd February

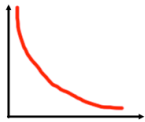
Corbettmaths



$$y \propto \frac{1}{x}$$



$$y \propto \sqrt{x}$$



$$y \propto x$$

Match each graph to the correct relationship.

Evaluate

$$64^{-\frac{2}{3}}$$

Simplify fully

$$\sqrt{275}$$

Write $18\cos 30^\circ + 2\tan 60^\circ$ in the form $a\sqrt{b}$

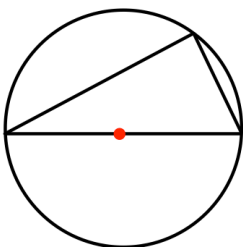
The population of an island is decreasing exponentially.

Martin has begun to monitor the population each year.

Year 6 - Population 3000

Year 8 - Population 2000

What was the population in Year 2?



Prove that the angle in a semi-circle is always 90°