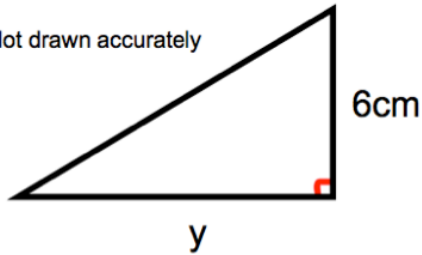


**25th January**

Corbettmaths

The area of the triangle is  $21\text{cm}^2$ Find  $y$ 

Not drawn accurately



There are 700 students in a school.  
A teacher says that the ratio of boys to girls is 1:2.

Explain why the teacher is incorrect.

Solve  $x^2 - 49 = 0$ The area of a circle is  $30\text{cm}^2$ .

Find the length of the radius.

Line A  $y = 2x + 3$

Line B  $y = \frac{1}{2}x - 3$

Line C  $y = 6 - x$

Line D  $y - 2x = 7$

Line E  $y + 2x = 3$

Which two lines are parallel?