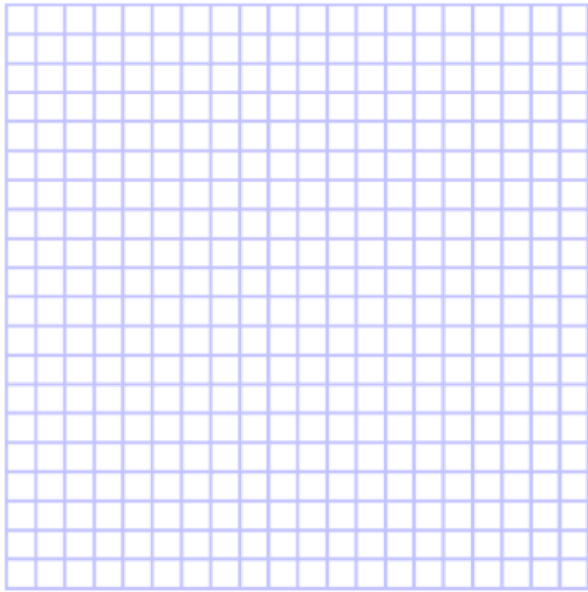


16th January



Corbettmaths

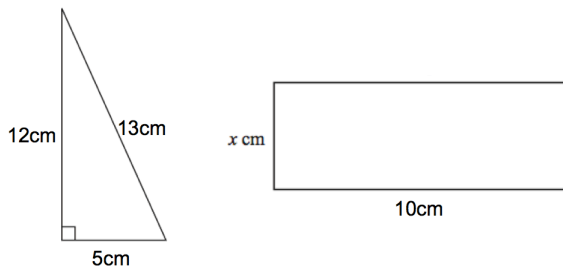


Draw the graph $x + y = 3$

Draw the graph $y = 5$

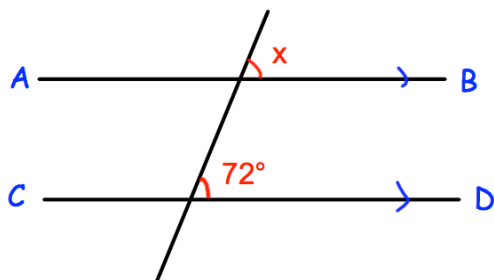
A coach seats 52 people.
250 people want to go on holiday.
How many coaches are needed?

How many empty seats will there be?



The area of the triangle and the rectangle are equal.

Find x .



Work out the size of the angle marked x .

Give a reason for your answer.