

19th January

Corbettmaths

The events A and B are mutually exclusive.

$$P(A) = 0.5$$

$$P(B) = 0.4$$

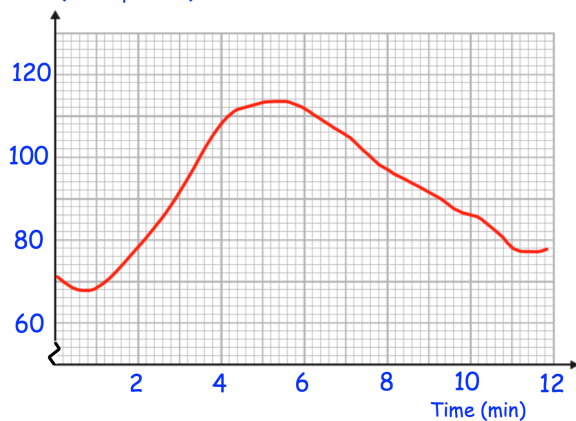
Find $P(A \cup B)$

Write in the form $a\sqrt{b}$, where a and b are integers to be found.

$$\frac{24}{\sqrt{6}}$$

Prove algebraically that the sum of the squares of any two odd numbers is always even.

Pulse (beats per min)



Work out the rate at which the pulse is increasing at four minutes.
Include units.

Work out the rate at which the pulse is decreasing at seven minutes.
Include units.