

29th January



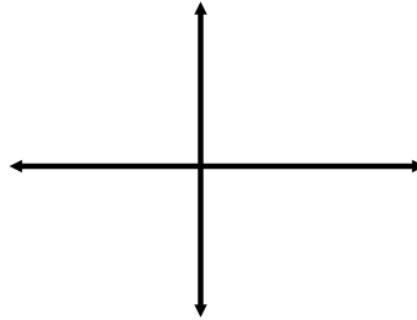
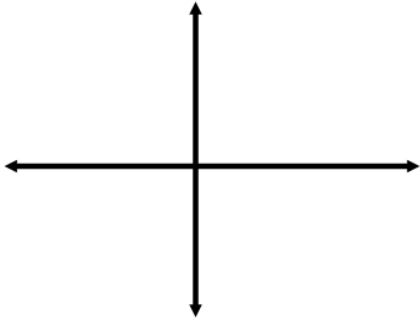
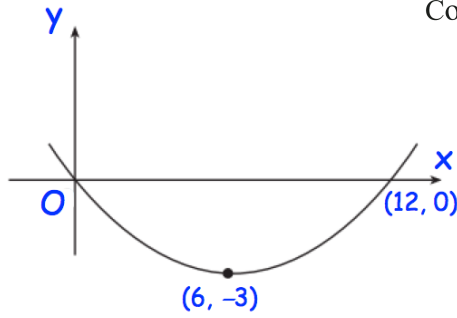
Corbettmaths

Shown is the graph of the function $y = f(x)$

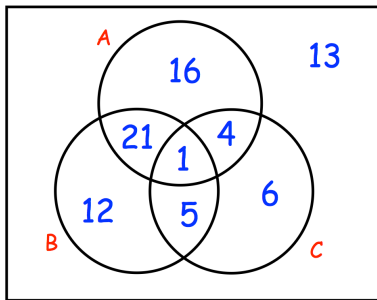
Sketch

(a) $f(-x)$

(b) $f(x) + 3$

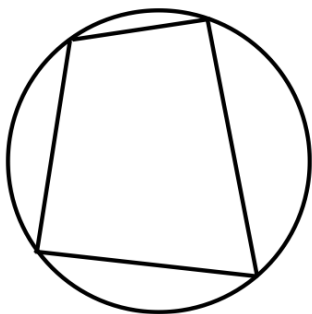


Find the coordinates where the line $2x - y + 3 = 0$ and the curve $y = x^2 - x - 7$ intersect



Find

$$P(A|B')$$



Prove the opposite angles in a cyclic quadrilateral add to 180°