

**5th January**

Corbettmaths

Each member of a club is going to receive a badge.

There are 140 members.

The badges are sold in packs of 9.

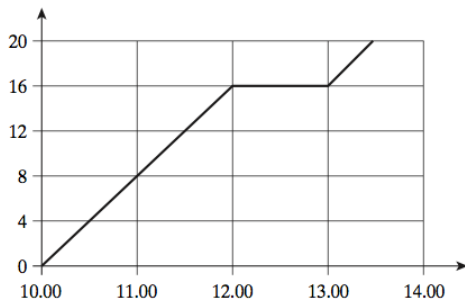
Work out the least number of packs of badges that need to be bought.

$$\frac{2}{7} \times \frac{1}{3}$$

$$\frac{4}{7} \div \frac{4}{5}$$

Work out

$$12^4$$



The graph shows the distance (in miles) from home at each time.

How far was Nicky from home at 11:30?

What happened between 12:00 and 13:00

Work out the speed between 10:00 and 12:00