

18th June

Corbettmaths

Solve, giving your answers to one decimal place.

$$4x^2 + 4x + 1 = 0$$

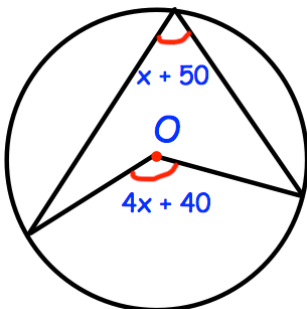
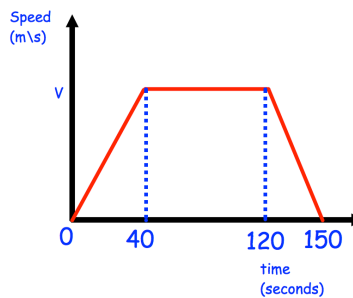
A plane travels 20 miles West and then 30 miles North. How far, in a direct line, is the plane from its starting point?

Simplify $4\sqrt{3} \times 2\sqrt{3}$

Simplify $\sqrt{48} \div \sqrt{12}$

Shown is a speed-time graph.
The total distance travelled is 1.15km

Find V.



Find x