

**27th June**

Corbettmaths

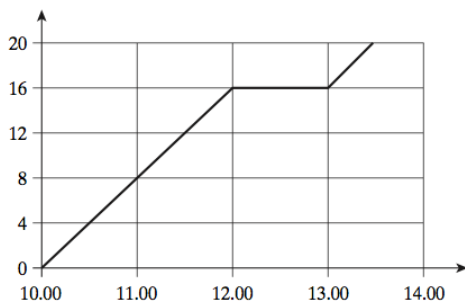
Which is larger?

$$\frac{17}{30}$$

$$\frac{2}{3}$$

Using the information that

$$47 \times 23 = 1081$$

write down the value of  $470 \times 230$ 

The graph shows the distance from home at each time.

How far was Natalie from home at 10:30?

What happened between 12:00 and 13:00

Calculate Natalie's speed from 10:00 and 12:00

Each member of a club is going to receive a badge.

There are 560 members.

The badges are sold in packs of 9.

Work out the least number of packs of badges that need to be bought.