

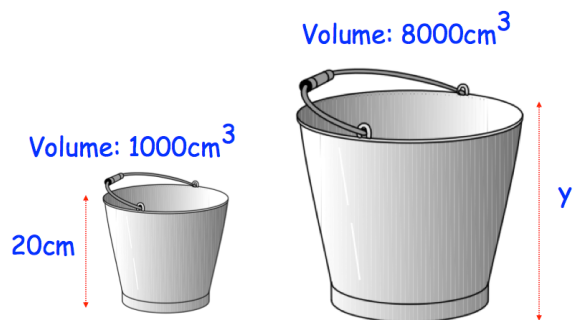
27th June



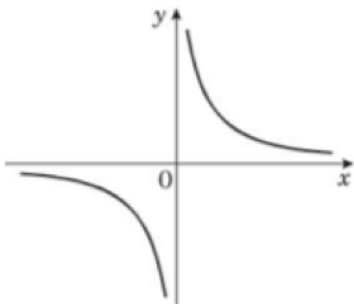
Corbettmaths

Evaluate  $25^0 + 25^{1/2}$ 

A is directly proportional to  $C^3$ .  
When  $A = 800$ ,  $C = 2$ .

Find A when  $C = 5$ 

The two buckets below are similar.  
Find y.



What graph is shown?

Make x the subject

$$y = \frac{x+7}{x-8}$$