

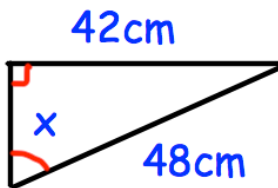
**28th June**

Corbettmaths

A bag contains white and red beads in the ratio 5:9

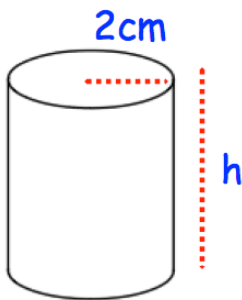
What fraction of the counters are red?

Frances organised a charity concert. Each ticket costs £20. There 400 people to the nearest 10 at the concert. Work out the maximum possible amount of money raised for charity.



Find x

A cylinder has radius 2cm.



The volume of the cylinder is  $100\text{cm}^3$   
Calculate the height of the cylinder.