

2nd March



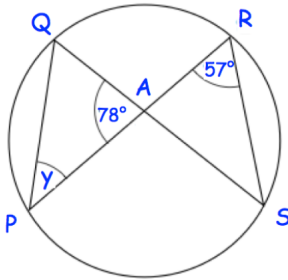
Corbettmaths

Work out

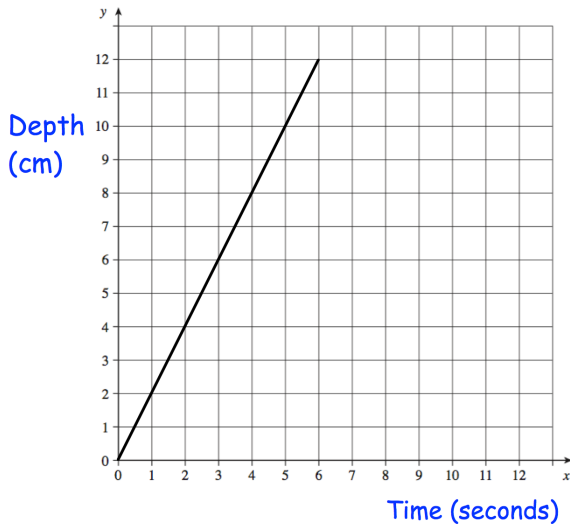
$$\sqrt{2} \times \sqrt{32}$$

Work out

$$8\sqrt{15} \div 2\sqrt{3}$$



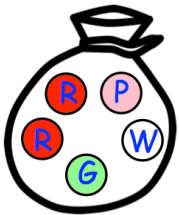
Find y



Water is poured into a glass for 6 seconds. The graph shows the depth of the water in the glass.

What is the rate of change of the depth of the water?
Give your answer in cm/s.

Another glass contains water that is 10cm deep. It is emptied at a rate of 2.5cm/s. Show this on the graph.



A game is played where a disc is removed, the colour noted and it is **replaced**. Then another disc is removed and the colour noted.

Calculate the probability that the two discs removed are **different** colours