

27th March



Corbettmaths

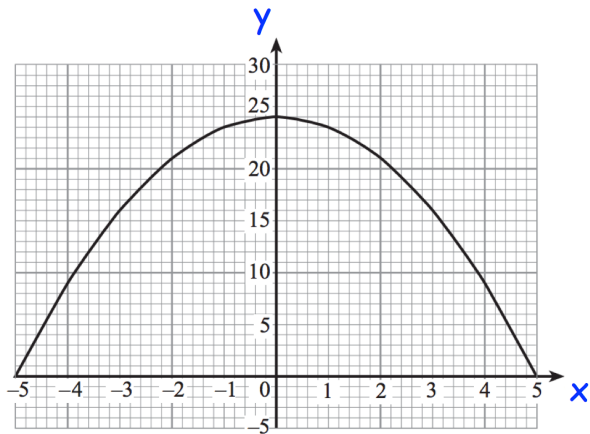
Given

$$f(x) = x + 3$$

$$g(x) = x^2$$

find

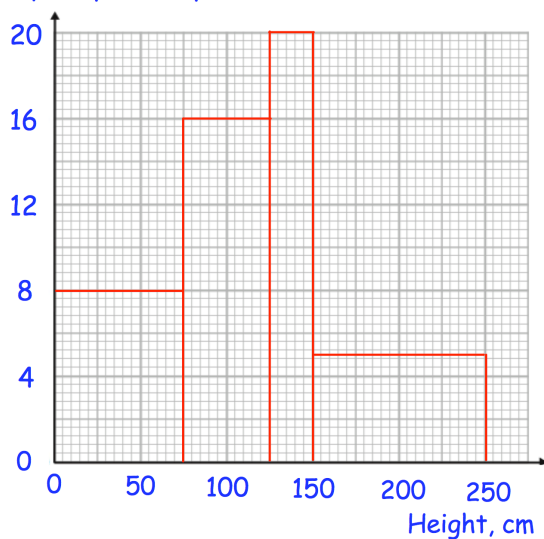
$$gf(x)$$



Calculate an estimate of the gradient of the curve at the  $x = 3$

Find an estimate of the area between the curve and the x-axis between  $x = 0$  and  $x = 5$

Frequency Density



Find an estimate of the median

Two sunflowers are selected at random. Calculate the probability that both sunflowers have a height greater than 2m.