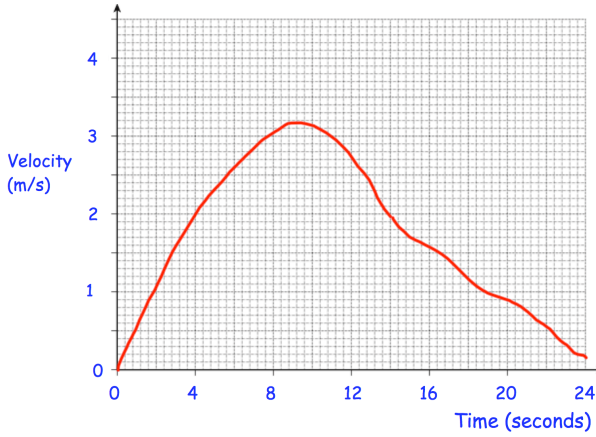


16th May



Corbettmaths

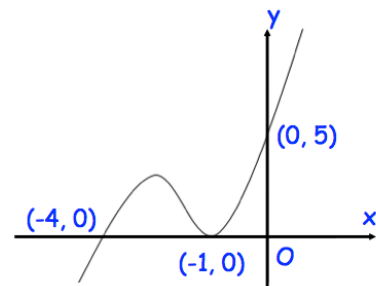


After how many seconds was the acceleration zero?

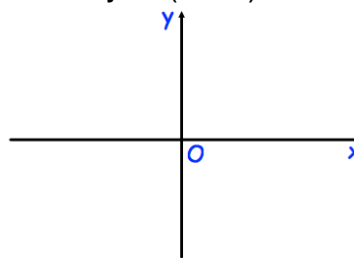
Work out an estimate of the distance travelled in the first 8 seconds?

Here is a velocity-time graph of a particle for 24 seconds

Is your answer to the distance travelled an over-estimate or an under-estimate? Explain your answer



Sketch  $y = f(x + 1)$



Solve

$$2x^2 + 3x - 2 \leq 0$$