

19th May



Corbettmaths

The curve $y = x^2 + 3x - 10$ is reflected in the y-axis.

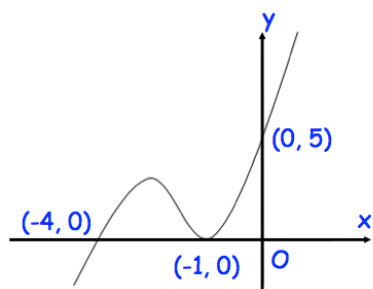
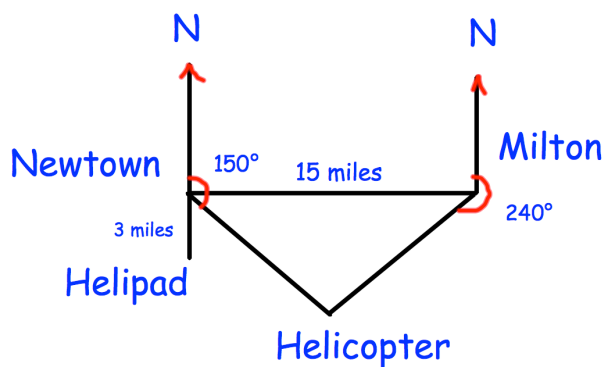
Write down the equation of the reflected curve.

The town Milton is 15 miles due East from the town Newtown.

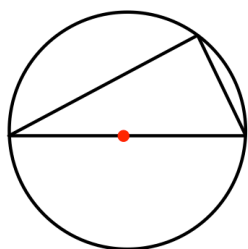
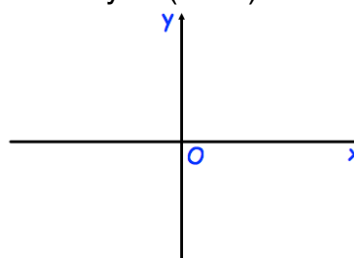
A helicopter is on a bearing of 150° from Newtown and a bearing of 240° from Milton.

A helipad is 3 miles due South of Newtown.

Work out the shortest distance from the helicopter to the helipad.



Sketch $y = f(x - 1)$



Prove that the angle in a semi-circle is always 90°