

25th May



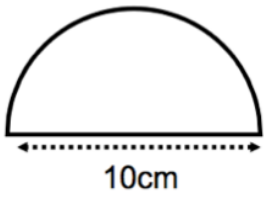
Corbettmaths

Simplify

$$a^4 \div a^{-2}$$

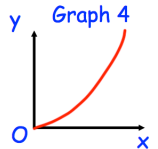
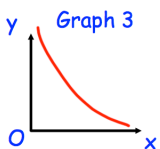
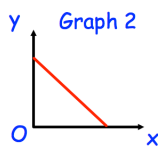
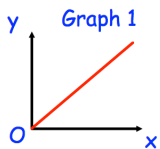
Simplify

$$\frac{s^3 \times s^4}{s^2}$$



The semi-circle and square have the same area.

Find x.

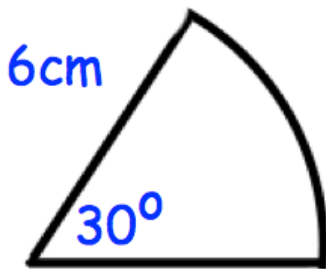


One of the graphs shows that y is directly proportional to x.

Which graph?

A bag contains white and red beads in the ratio 5:7

What fraction of the counters are white?



Calculate the area of the sector.