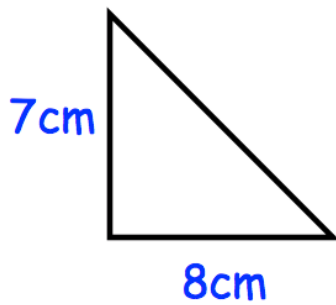


30th May



Corbettmaths

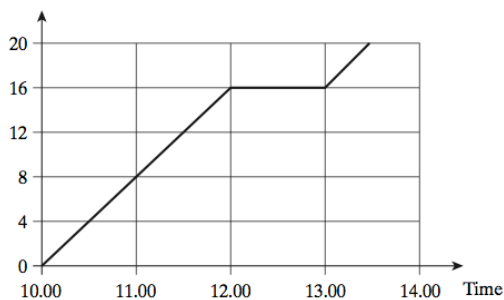


Calculate the area

Write down the cube root of 64

$$\frac{2}{5} \times \frac{3}{10}$$

$$\frac{9}{10} - \frac{1}{3}$$



Thomas cycles from Randalstown to Glengormley. The distances are in miles

How far is Thomas from Randalstown at 11:30?

How far does Thomas travel in the first two hours of his journey?

What is Thomas's average speed between 10:00 and 12:00?