

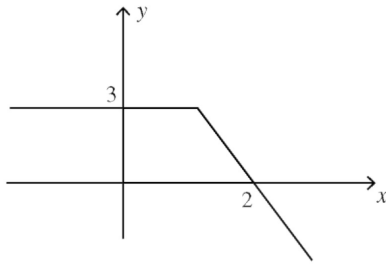
4th May

Corbettmaths

The curve with equation

 $y = x^2 - 2x - 24$ is reflected in the x-axis

Write the equation of the reflected curve

Shown is $y = f(x)$ Sketch $y = f(-x)$ Sketch $y = -f(x)$

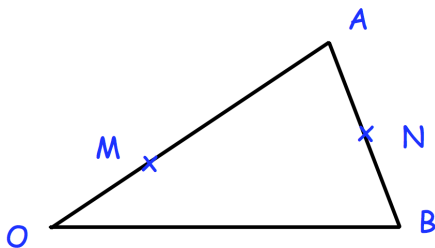
Given

$$f(x) = 5x - 3$$

$$g(x) = 2x + 1$$

Find

$$fg(-1)$$



$$\vec{OA} = 4a$$

$$\vec{OB} = 5b$$

OM:MA = 1:3 and N is the midpoint of AB

Find