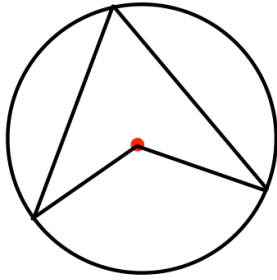


6th May

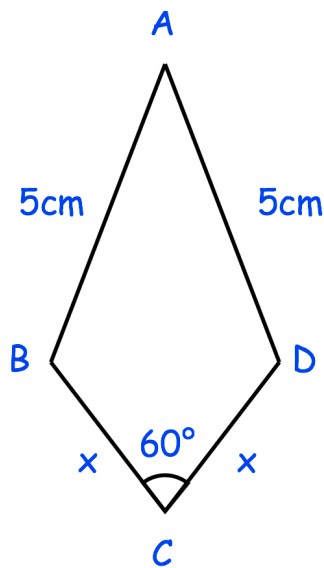


Corbettmaths



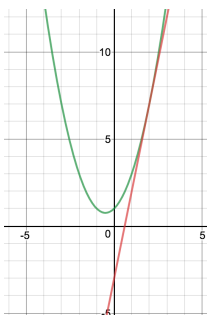
Prove that the angle at the centre is twice the angle at the circumference.

Shown is kite ABCD



Prove

$$\cos BAD = 1 - \frac{x^2}{50}$$



Show, by using simultaneous equations, that the line $y = 5x - 3$ is a tangent to the curve $y = x^2 + x + 1$

There are 9 counters in a bag.

5 of the counters are red
4 of the counters are white.

Tom takes at random three counters from the bag.

Work out the probability that the counters are not all the same colour.