

**1st November**

Corbettmaths

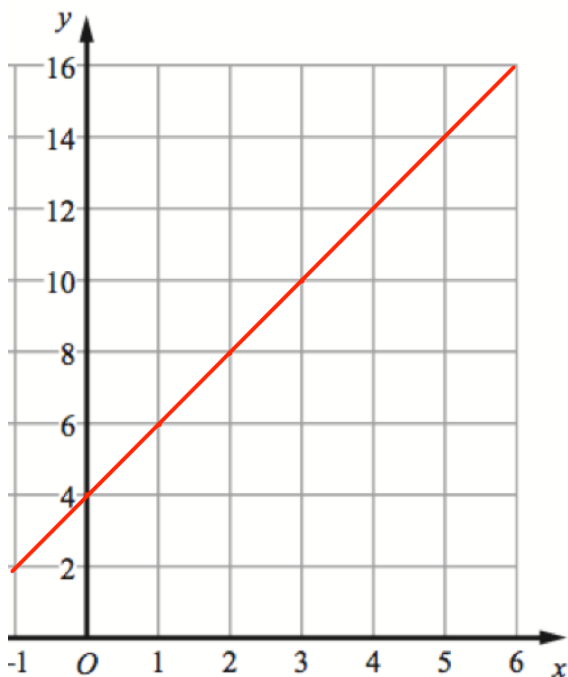
A car travels for 4 hours at an average speed of 45 mph and then 6 hours at an average speed of 35 mph.

Work out the total distance travelled.

Work out the average speed for the entire journey.

A lamp is on sale at £22.05  
This is a 10% reduction of the normal price.

What was the price of the lamp before the reduction?



Find the gradient of the line.

Work out the equation of the line.