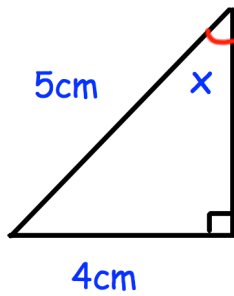


17th November



Corbettmaths

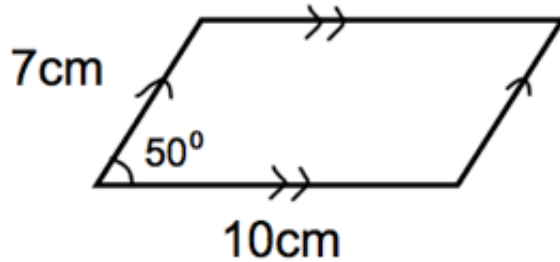


Write down the value of $\sin x$
Give your answer as fraction.

Simplify

$$\frac{3}{w} \times \frac{x}{4} \times \frac{y}{w}$$

Find the area of the parallelogram.



Circle the values which are
irrational

$$4^0 \quad \sqrt{64} \quad \sqrt{3}$$

$$100^{0.5} \quad \pi$$

Solve $5^x = 40$.

Give your answer to 1 decimal
place.