

**20th November**

Corbettmaths

The equation

$$(x + 1)(x + 3) = 84$$

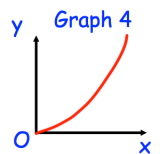
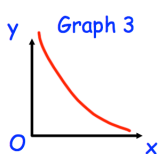
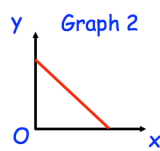
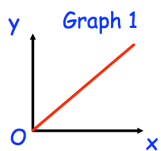
has a solution between 7 and 8.  
Find this solution to 1 decimal place.

Factorise  $x^2 + x - 6$ 

Work out 465% of 70

Work out

$$2^4 \times 4^{-2}$$



One of the graphs shows that  $y$  is directly proportional to  $x$ .

Which graph?