

15th October



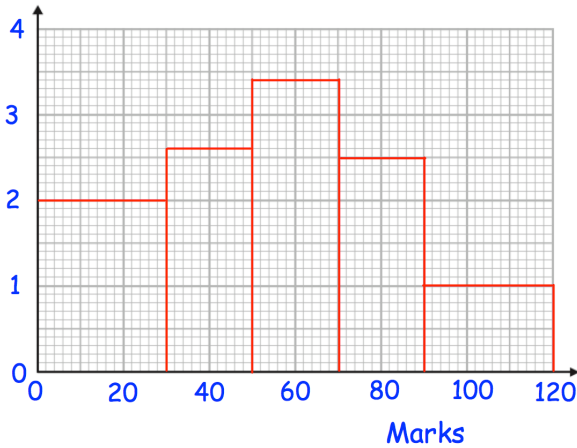
Corbettmaths

Conor says

$$\cos(45^\circ) = \frac{1}{\sqrt{2}}$$

Is he correct?

Frequency Density



260 people sit a driving theory test.
Their results are shown in this histogram.

10% of the people scored less than x marks

Find x

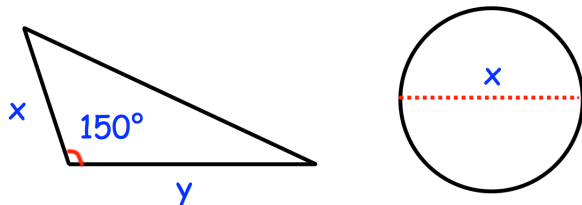
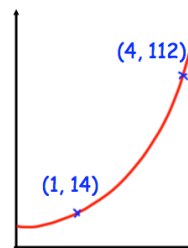
5% of people scored more than y marks.

Find y

The sketch shows a curve with equation $y = ab^x$ where a and b are constants and $b > 0$

The curve passes through the points (1, 14) and (4, 112)

Calculate the value of a and b



The triangle and circle have the same area.

Express y in terms of x.