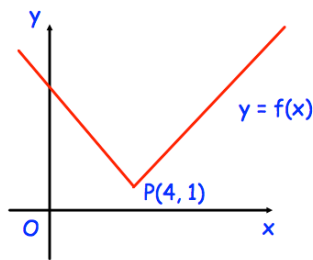


**23rd October**

Corbettmaths



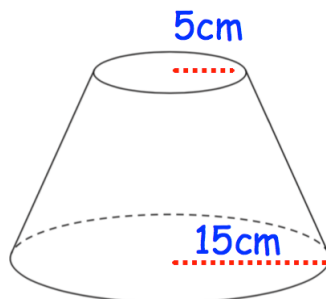
What are the coordinates of the new position of P when the graph  $y = f(x)$  is transformed to the graph of  $y = f(x+3)$ ?

Prove  $(n + 10)^2 - (n + 5)^2$  is always a multiple of 5

The graph of  $y = c + d^x$  passes through the points (1, 7) and (3, 127).

$a > 0$  and  $b > 0$

Find the values of a and b



A frustum is made by cutting a small cone from the top of a larger cone, that was 21cm tall.

Calculate the surface area of the frustum

A group of students want to estimate how many woodlice live in a greenhouse. They catch and mark 20 woodlice. They return the 20 woodlice to the greenhouse. They then catch 50 woodlice and 11 are marked

Estimate the number of woodlice in the greenhouse.