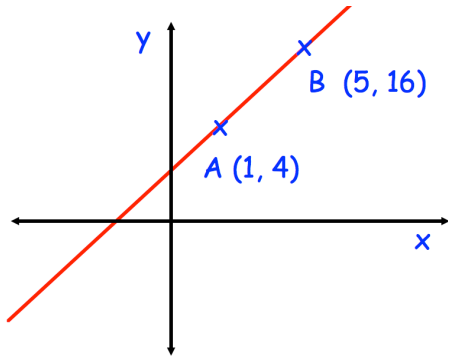


26th October



Corbettmaths



A straight line passes through the points $A(1, 4)$ and $B(5, 16)$.

Find the equation of the line parallel to AB that passes through $(1, 7)$

Write down the equation of a line perpendicular to AB

Factorise fully $2y^2 - 50$

Harry gets the train to work in the morning.
He works Monday to Friday.
The probability the train is late is 0.3

Find the probability the train is late exactly three times.

Two containers are mathematically similar.

The height of container A is 5cm.
The height of container B is 15cm

The volume of A is 120cm^3

What is the volume of B?