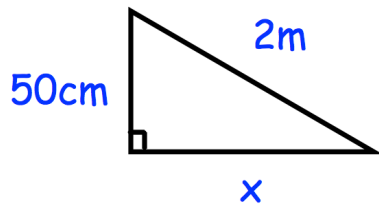
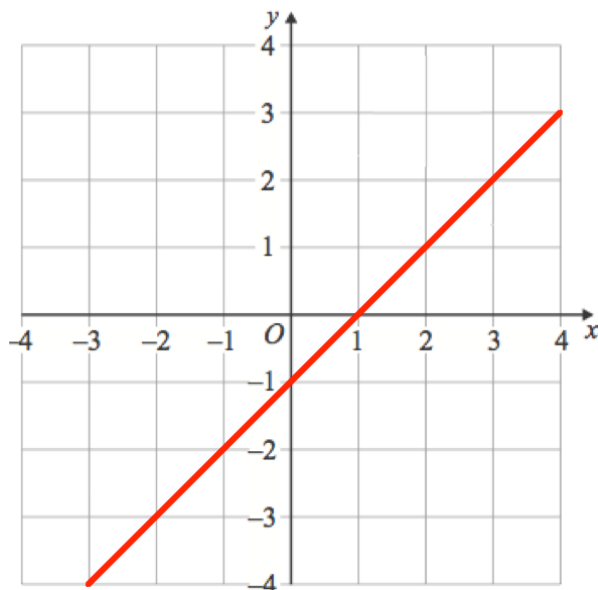


1st September

Corbettmaths

Tick the correct box

 5^0 Greater than 1 Equal to 1 Less than 1 Find x 

Work out the equation of line L

A clothes shop normally sells their goods at 80% above cost price.
 In a sale, the shop reduces the prices by 25%.
 What percentage profit does the shop make on clothes sold in the sale?